



19 S Vuelta Herradura

Knowing Santa Fe

\$1,685,000

Relaxed Refinement and Mountain Panoramas in La Tierra

La Tierra's dramatic terrain is the backdrop for this magnificent hill-top estate. A relaxing ambience and soft natural light fill the main residence, the heart of which is a spacious living room. A kitchen, a dining area, and multiple portales adjoin, creating an ideal configuration for effortless entertaining. Nearby is a home theater boasting a built-in subwoofer, projector, and screen. Tucked away on the cool north side of the home, the master suite easily accesses an open-air hot tub with a stunning view. Throughout the home, panels of glass "disappear" to blur the line between indoors and out. Handsome wood and stonework and thoughtfully placed fireplaces contribute to the distinctive style. With 50Mb/10Mb internet, a thorough smart-home system allows for management of lighting, temperature, and sound. Adding to the appeal are an office or second bedroom, a lower-level recreation room with a bar and climate-controlled wine room, a charming 982-square-foot guesthouse, and an oversized three-car garage.

Ray Rush
Tim Van Camp
John Rigatti

seller's representatives

ray 505.984.5117
tim 505.984.5118
john 505.984.5141

231 Washington Ave.
Santa Fe, NM 87505
505.988.8088

info@knowingsantafe.com
<http://www.knowingsantafe.com>

Sotheby's
INTERNATIONAL REALTY

property summary

bedrooms	3
bathrooms	4
lot size	14.43 acres
square footage	4,694 sq.ft.
subdivision	La Tierra
mls number	201702422

Property

A winding drive, culminating at a regal porte cochère, provides an appropriately grand introduction to the estate. Aspens, pines, verdant vines, native grass, and other tasteful landscaping surround the restful private haven, which blends striking Southwestern architecture with the rugged terrain, majestic mountains, and rose-colored sunsets that envelop it. Among several beguiling outdoor living and entertaining spaces, one portal includes a built-in gas grill and a hot tub and looks out over lush irrigated grounds and landscaping toward the majestic Sangre de Cristos. On the western side of the home, patios and portales were designed for appreciation of the Jemez and their sunsets.



House

La Tierra's dramatic terrain is the backdrop for this magnificent hilltop estate. A relaxing ambience and soft natural light fill the main residence, the heart of which is a spacious living room. A kitchen, a dining area, and multiple portales adjoin, creating an ideal configuration for effortless entertaining.

Nearby is a home theater boasting a built-in subwoofer, projector, and screen. Tucked away on the cool north side of the home, the master suite easily accesses an open-air hot tub with a stunning view. Throughout the home, panels of glass "disappear" to blur the line between indoors and out. Handsome wood and stonework and thoughtfully placed fireplaces contribute to the distinctive style. With 50Mb/10Mb internet, a thorough smart-home system allows for management of lighting, temperature, and sound. Adding to the appeal are an office or second bedroom, a lower-level recreation room with a bar and climate-controlled wine room, a charming 982-square-foot guesthouse, and an oversized three-car garage.



Entry Foyer

Dramatic arched double doors of wood and glass open from the regal porte cochère to introduce the home, with its open natural flow, dramatic views, and sophisticated Southwestern style.



Living Room

Flowing directly from the foyer, the formal living room is spacious, open, and inviting, with organic lines and curves. It features a soaring ceiling with clerestories between sturdy beams, rich quartzite flooring, and breathtaking views of mountains in two directions. A fireplace anchors one corner of the room, contributing to the sense of refinement and warmth, while shades and outdoor awnings are controlled by the smart-house system.

The kitchen is open to the living area in an easy, natural configuration. Glass doors open to cool portales, facilitating the grandest indoor-outdoor entertaining.



West Portal

Accessible from the living room, master bedroom, and guest suite or office, this stunning portal enhances the living and entertaining options with a view that includes hillsides, arroyos, mountains, and sunsets. Sturdy pillars and rugged flagstone paving contribute to the stylish sensibility.



Dining Room

Open to the kitchen, the casual but stylish dining area boasts black walnut floors with custom teak accents, lighted shelving, a custom light fixture, and computer controlled drapes.



Kitchen

A delight for cooks and entertainers, the spacious, stylish open kitchen is impeccably appointed. Highlights include teak cabinetry with under-cabinet lighting; custom Caesarstone counters; appliances from Sub-Zero, Bosch, Electrolux, KitchenAid, Sharp, and GE Monogram; Kohler sinks; and an 18-foot teak and black walnut island with decorative pendant lighting and bar seating for up to six. An informal dining area adjoins, and the space flows naturally to the living room. Around the corner through an arched doorway are a walk-in pantry and a built-in desk with a sunny window.



Sun Room

With windows on two sides and handsome woodwork throughout, the sunroom is outfitted for numerous functions, with dual rain-sensing remote-controlled skylights, a ceiling fan, a utility sink, a floor drain, and a convenient pet door. Complete with storage cabinets, this cheerfully warm space can be easily accessed from the kitchen and the garage and is an appropriate segue between the two.



Eastern Portal / Hot Tub

One of several beguiling outdoor spaces, this portal includes a built-in gas grill and a hot tub.

From every vantage, it looks out over lush irrigated grounds and landscaping toward the majestic Sangre de Cristos.



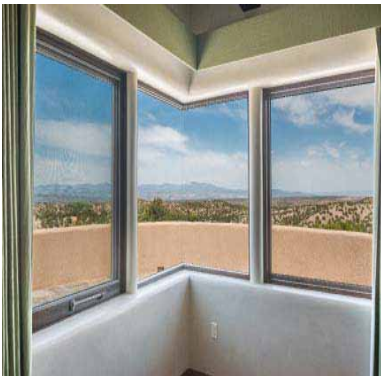
Master Bedroom

The secluded, restful master bedroom enjoys a sweeping view and includes a custom teak bed frame and headboard, stylish built-in modern shelving with pet accessibility, handsome hardwood flooring, access to a portal and sunny patio, and custom drapes with smart-house integration. Steps away is a luxurious en suite bath.



Patio

Enveloping the northwest corner of the home, this gloriously sunny patio is an ideal location for relaxing beneath Santa Fe's glorious skies, appreciating a truly majestic view to the north and west, or stargazing at night.

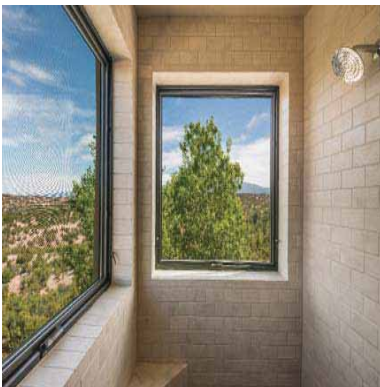


Master Bathroom

Serene in style and palette, the spa-like master bath has a stone-topped vanity with two sinks, stone tile floors, a full wall of wood-faced storage cabinets, a walk-in shower with cream-colored ceramic tile-work and two wide windows, a private water closet, and lovely light. A small open walk-in closet offers useful shelving.



Shower



Guest Bedroom / Office

Facing west for breathtaking views of sunsets over the Jemez, the guest bedroom or home office offers a number of welcome amenities, including built-in teak shelving, superior technological wiring and integration, and windows with custom computer-controlled drapes.



Bathroom

Easily secluded behind a custom teak pocket door, the handsome guest bath features a single-sink vanity, a spacious walk-in shower, and earthy-hued stone tile that creates a warm ambience.



Media Room

The home's renovation transformed this space into a superior media room, equipped with a built-in retractable projector and screen as well as computer-controlled drapes and shades, built-in speakers, an amplifier, and a subwoofer built into a corner banco. When not serving as a home theater, the space makes a tranquil sitting area with a striking western view and a warming gas and wood-burning fireplace.



Powder Room

Thoughtfully secluded but convenient for use while entertaining, the delightful powder room features a travertine sink above solid teak cabinetry and an eye-catching panel of artful glass tile.

Family Room

Secluded on the lower level for private recreation and festivities, this space includes a wet bar with a granite countertop and decorative pendant lighting as well as plenty of space for reading, relaxing, and practicing music or yoga. Clerestory windows admit welcome gentle light.



Wine Cellar

Oenophiles and novice collectors alike will appreciate the state-of-the-art wine cellar, with is secluded behind a stacked-stone wall with a tinted-glass window. It has been appointed with abundant custom shelving and climate control.



Garage

The spacious heated three-car garage, which can be entered via a remote keypad entry, includes ample custom storage, a workshop area, and plenty of room for utilities, including a whole-house water filtration system.



Guest House

Linked with the main house via the garage but enjoying its own private entry and consummate privacy, the peaceful guest-house is a serene getaway with a living area, a charming full kitchen, a spacious bath, and a wraparound portal with a stunning mountain view. In-floor radiant heating, air conditioning, and a wood burning and gas fireplace maintain a pleasant temperature year-round. An Apple Airport Express wi-fi base station with Airplay integration affords technological comfort.



Kitchen

The delightful guesthouse kitchen has been thoughtfully appointed with a four-burner Bosch gas range, a full-size refrigerator, and a bar with a wine rack. Colorful tile-work, vigas and corbels, and a window with a mountain view add to the charm.



Living Area

A cheerful Southwestern charm fills the main living area of the guesthouse, which features a kiva fireplace, a coved ceiling with vigas, stone tile flooring, a nicho for a Samsung 1080p LCD television, a banco window seat, and dramatic light and views. The space is open to the kitchen and a portal perfect for relaxing in privacy.



Bedroom

Separated from the living area by an architectural half wall with pillars, corbels, and storage shelves and cabinets, the open sleeping area enjoys a breathtaking Sangre de Cristo view and direct access to the portal through glass doors. A bath is nearby.



Bathroom

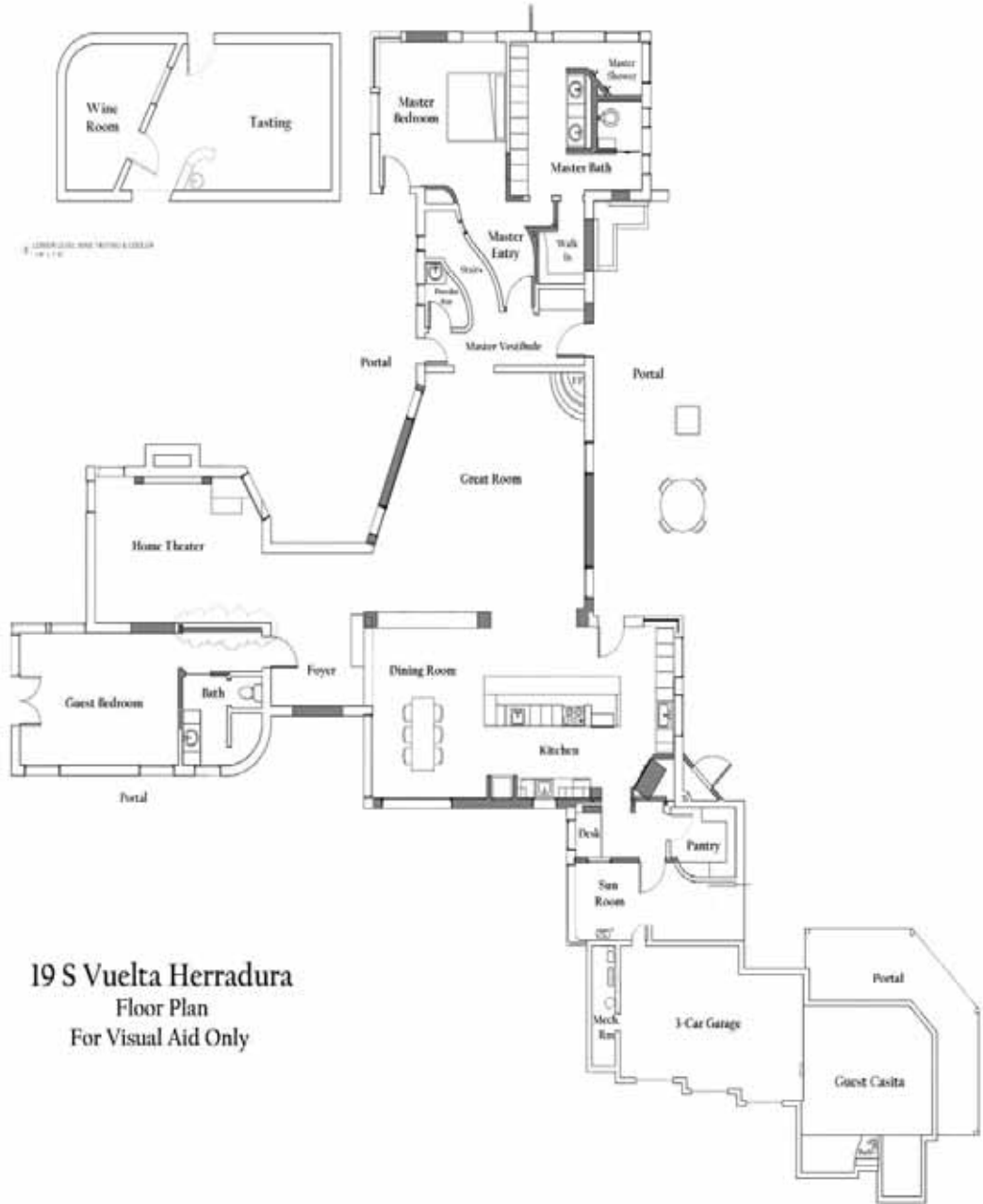
Guests will appreciate the spacious bath, which includes a vanity with seating, generous cabinet space, a skylight, and both a shower and an open walk-in closet with whimsical stained-glass-inspired windows.



Portal

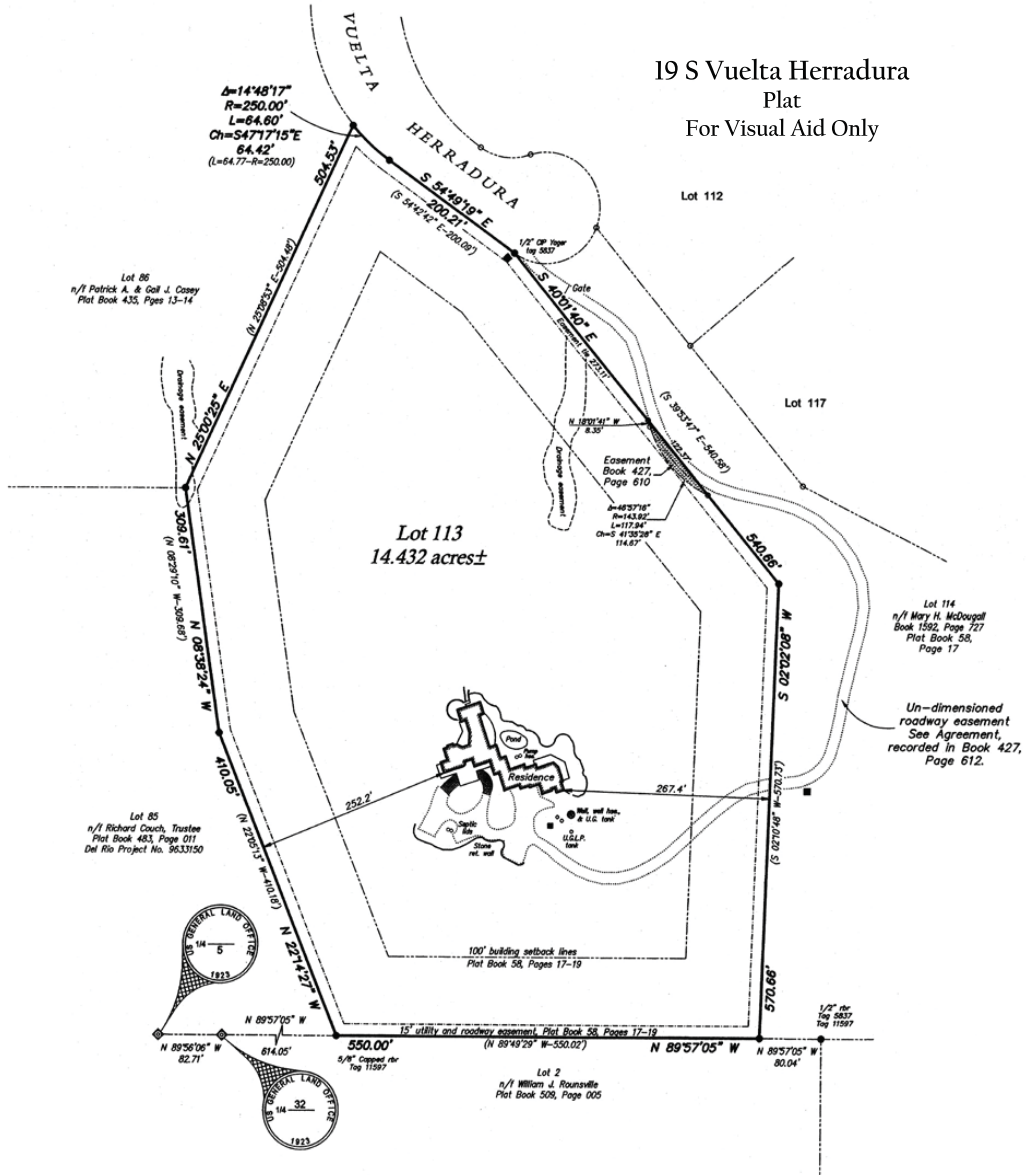
A breezy portal with a stunning view of the Sangre de Cristos runs along an entire side of the guesthouse, offering ample space for relaxing or dining in the shade while appreciating the colorful mature landscaping and majestic mountains.





19 S Vuelta Herradura
Floor Plan
For Visual Aid Only

19 S Vuelta Herradura Plat For Visual Aid Only



Property Detail

bedrooms	3
bathrooms	3 three-quarter 1 half
square footage	3,712 ft ² main 982 ft ² guest
garage	3-car, attached
lot size	14.432 acres
foundation	slab
construction	insulated concrete forms, other
roof	flat, foam
year built	2008
builder	karma works
flooring	flagstone, wood, other
style	pueblo
heating distribution	radiant
heating system	propane
cooling system	refrigerative
waste	septic
water	well, private
taxes	\$8,554.36 in 2017
hoa fees	\$375/year
subdivision	La Tierra
mls number	201702422

No representations or warranties either express or implied are made as to the accuracy of the information herein or with respect to the usability, feasibility or condition of the property. Subject to change, sale or withdrawal without prior notice of any kind.