



1202 Ojo Verde

Lot 126-A and Lot 125 Sierra Del Norte Subdivision

KNOWING SANTA FE

\$3,500,000

Sophisticated Mountain Contemporary

This sophisticated home high in the hills north of Santa Fe enjoys a sweeping view across the city skyline toward the Jemez Mountains in the distance. Its approximately 6,448-square-foot floor plan features alluring entertaining spaces and discrete private quarters that radiate off a grand skylit gallery hallway. A subtle Southwestern character is suggested by hardwood floors, ceiling beams and vigas, soothing plaster walls, and ceramic tile, while striking finished concrete flooring flows throughout, contributing a distinctive contemporary flair. A chic great room, which offers both living and dining areas, joins a relaxed den to provide a wonderful variety of spaces for lounging and entertaining. At the end of the central hallway are two sizeable bedroom suites; a wine cellar and tasting room, a generous gym with sliding glass doors and a mirrored wall, an office or additional bedroom, and a light-filled bath are tucked away on the home's lower level. Down a short hallway off the foyer are an artful powder room, a delightful attached guest casita with a kitchenette, and a door to a courtyard with a sunset-facing hot tub. Two portales encourage enjoyment of the outdoors: the west-facing space features a kiva fireplace, a television, and useful sunshades, while the eastern portal includes a grilling area and gives way to a serene backyard. The walled and securely gated property has been tastefully landscaped with colorful native flora and trees, including stately aspens.

Tim Van Camp
John Rigatti

seller's representatives

tim 505.984.5118
john 505.984.5141

231 Washington Ave.
Santa Fe, NM 87501
505.988.8088

info@knowingsantafe.com
<http://www.knowingsantafe.com>

Sotheby's
INTERNATIONAL REALTY

Property

High in the hills north of downtown Santa Fe, this impressive property enjoys a sweeping view of the Jemez and Sandia Mountains. The walled and securely gated estate has been tastefully landscaped with colorful native flora, including native grasses and trees. The expansive main portal is ideal for entertaining and appreciating the view and is adjoined by a courtyard with a sunset-facing hot tub. The serene backyard includes a fountain and a portal with a grilling area.



House - Entry Courtyard

At the entrance to the home, a lovely walled courtyard with numerous trees and a striking water feature introduces the chic modern aesthetic that pervades the estate as a whole. An artistic glass-paneled front door opens to the comfortable sophistication within.



Foyer / Gallery

A central gallery connects the major areas of the home in a natural, graceful, open flow. Poured concrete flooring, glowing plaster walls ideal for displaying art, soaring ceilings, and multiple oversized skylights create a sophisticated modern ambience. A coat closet and powder room are thoughtfully sited nearby.



Powder Room

Discreetly sited just off the main gallery, the powder room is filled with calm, soothing earth tones. It features a distinctive rough-hewn stone countertop and a punched-metal light fixture.

A skylight fills the space with subtle sunlight during the day.



Laundry Room

Conveniently but discreetly sited near the kitchen and mudroom, the spacious, sunny laundry room includes plentiful counter, cabinet, and drawer space lining two walls as well as a utility sink and a coat or storage closet.



Kitchen

Cooks will appreciate the inviting, expertly appointed kitchen, which boasts top-tier appliances, abundant cabinet and granite-topped counter space, a large butcher-block-topped island with a bar sink, a breakfast area, and built-in shelving and cabinets. Over the sink, a window provides a delightful view of the lush backyard.



Butler's Pantry / Mudroom

Just off the kitchen is a mudroom area and butler's pantry with an open closet, banco seating, plentiful shelving, counter space ideal for food preparation or catering, a wine chiller, and door to the two-car garage.



Backyard

With its verdant grass, stacked Anasazi stone, flagstone paths, and melodic water feature, the backyard is an idyllic hidden sanctuary. A comfortable rear portal, accessible from the kitchen and den, overlooks it all.



Portal

Overlooking the enchanting backyard, this relaxing portal is designed for alfresco celebrations. Accessed from the kitchen and den through sets of screened doors, it encompasses both lounging and dining areas, including a built-in grill with decorative surround. A lush yard with serene water feature is only steps away.



Great Room

Hardwood flooring, elegant plaster walls, a central contemporary wood-burning fireplace, and a soaring ceiling accented with beams combine to create a refined yet inviting ambience. Included in the expansive space is an open dining area with stone-topped banquette. Numerous windows and doors present a breathtaking view of the Jemez Mountains, and doors open to a glorious living and dining portal.



Portal

Two sets of screened doors open from the great room to this extensive portal, which features banco seating, a kiva fireplace, a television, and useful sunshades. It provides a fabulous hillside spot for dining, entertaining, or simply relaxing amid fresh breezes and in view of majestic mountains. Just outside the gate, a small courtyard looks westward over the treetops and neighborhoods below, encouraging private outdoor relaxation and hot tub soaking. Nearby, a path wanders beneath mature aspens toward the driveway.



Den / Media Room

A mellow contemporary style and lovely natural light pervade the den, a thoroughly enjoyable space for reading, relaxing, movie watching, or entertaining. Highlights include blonde hardwood floors; a distinctive arched skylit ceiling; oversized windows overlooking the colorful backyard; and plentiful shelving for books, memorabilia, and media, including a wide-screen television with surround sound components. A screened double door offers access to the portal for simple, graceful indoor-outdoor entertaining.

Office Nook

Behind double folding doors is a cleverly concealed office nook with desk space, useful cabinets and drawers, and a small window providing sun-dappled light from the backyard.



Primary Bedroom

To the right at the end of the central gallery is a short stairway leading to the secluded master wing. A gentle natural light and a view toward the mountains contribute to the serenity of the restful and ample bedroom. This tranquil suite also includes an opulent bath, and room-size walk-in closet.



Closet / Dressing Room

The gratifying room-sized closet includes abundant shelving, racks, a bureau with vanity seating, and other storage options. Both overhead lights and skylights help make the space ideally illuminated. The door's antique wrought-iron accent adds distinctive flair.



Bathroom

The airy spalike bath features a host of attractions, including a cosmetic vanity, skylights, a discrete water closet area, and a step-in tiled shower with a glass door and Southwestern earth tones.



Second Primary Bedroom

Restful and shady, this guest bedroom has a welcoming ambience and such appealing touches as carpeted floors, beams and decking, a ceiling fan, and windows looking southward into the surrounding trees. Nearby are a spacious bath and room-sized walk-in closet offering considerable storage space.



Closet

Walls of various racks and shelves as well as a tall built-in vanity chest are among the appointments of this carpeted room-sized closet. A small east-facing window provides gentle natural light.



Bathroom

This lovely bath includes a vanity with tile countertop, cabinets, and drawers; a medicine and linen closet; and a chic tiled step-in shower with glass door. Nearby is an open carpeted walk-in closet.



Downstairs - Exercise Room

The private gym features versatile hardwood flooring, built-ins, and a mirrored wall for monitoring form. South- and west-facing windows provide a subtle natural light, while double doors open to the property and admit fresh air.



Downstairs Office

Cool, quiet, and private, this relaxed space features lovely hardwood floors, a large window providing a western view, and abundant thoughtful built-ins. Nearby is an open, efficient lighted walk-in closet area, which offers an assortment of shelves and racks.

Although it currently serves as an office, this space could easily be adapted to function as an additional bedroom, if desired.



Bathroom

A cool Mediterranean ambience pervades this bath. Behind a glass door, the large tiled shower features a west-facing glass-block window surrounded by blue and green tile accents. The vanity offers a single sink, and generous cabinets for linens and other storage are sited just outside.



Wine Room

Secluded at the base of the main stairway, the home's wine cellar consists of a cool, spacious storage area lined with shelves capable of accommodating hundreds of bottles. The room is generous enough to allow for storage of other valuables as well and to accommodate a table for tastings.



Garage

Accessed via the mudroom off the kitchen, this spacious two-car garage has concrete flooring, plentiful lighting and skylights, space for additional appliances, and numerous storage closets and cabinets.



Casita - Main Room

This generous space—which includes sleeping space, a sitting area, built-in shelving and media storage, a spacious double closet, and windows for appreciating the dramatic western mountain view—has a subtle elegance and a welcoming warmth.



Kitchenette

The casita's kitchenette offers visitors the convenience of a small refrigerator, a microwave, a two-burner cooktop, and a counter area with a sink.



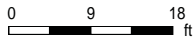
Bathroom

Handsome neutral tones pervade this bath, with its private water closet, linen closet, and single-sink vanity with tile surround and useful cabinets and drawers. A tiled shower with a glass door is spacious and accommodating. Warm natural light washes in through a skylight overhead.



1202 Ojo Verde, Santa Fe, NM

Main Floor - For Visual Aid Only



PREPARED: 2021/11/23



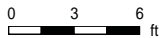
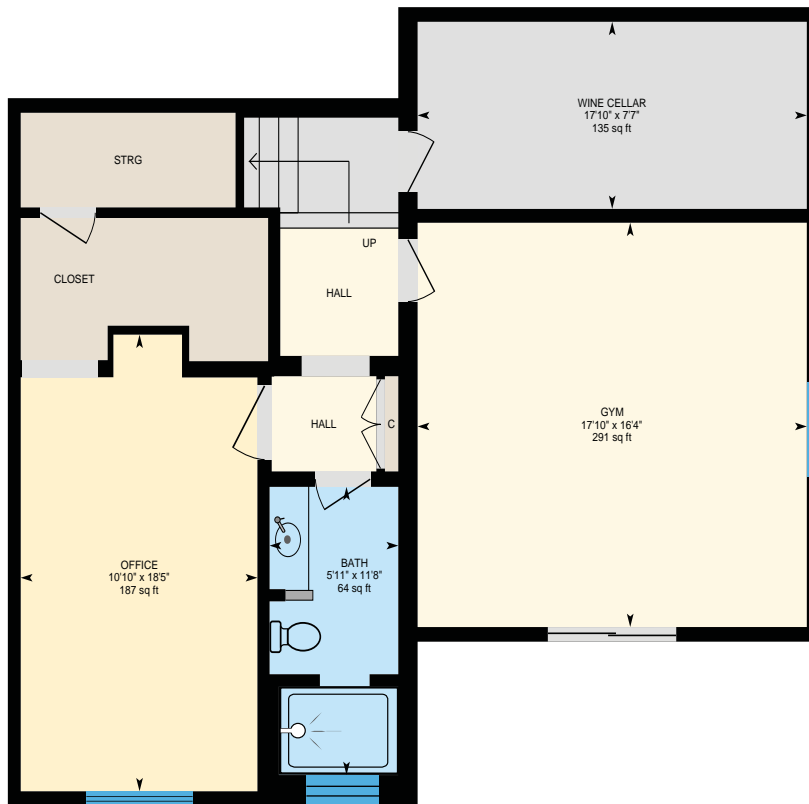
White regions are excluded from total floor area in iGUIDE floor plans. All room dimensions and floor areas must be considered approximate and are subject to independent verification.



Floor Plan - Downstairs

1202 Ojo Verde, Santa Fe, NM

Downstairs - For Visual Aid Only



PREPARED: 2021/11/23



White regions are excluded from total floor area in iGUIDE floor plans. All room dimensions and floor areas must be considered approximate and are subject to independent verification.



Property Detail

property summary	
bedrooms	3
bathrooms	1 full 3 three-quarter 1 half
square footage	5,825 ft ² main 623 ft ² guest
acreage	3.254 acres
year built	1996
style	contemporary, pueblo
roof	foam
construction	block, frame, stucco
foundation	basement, slab
heating system	natural gas
heating distribution	radiant
flooring	carpet, concrete, tile, wood
gas	natural
water	city
electric	public
sewage	city
subdivision	sierra del norte
hoa fees	\$400 annually per lot / total \$800.
taxes	\$15,321.49 in 2021 (total lots)
mls number	202105002

No representations or warranties either express or implied are made as to the accuracy of the information herein or with respect to the usability, feasibility or condition of the property. Subject to change, sale or withdrawal without prior notice of any kind.