



806 E. Palace Ave, Unit A

KNOWING SANTA FE

\$835,000

Contemporary Eastside Getaway

Combining clean contemporary style with an enviable Eastside address, this delightful modern Territorial-inspired condominium home was designed by Trey Jordan — known for his sophisticated, innovative interpretations of traditional Santa Fe style. Both stylish and inviting, it features an open living area with a corner fireplace and a portal; an impeccably outfitted light-filled kitchen with an island, a dining area, superior appliances, and a generous pantry; two bedrooms, including a peacefully discreet master suite on the lower level; two and one-half baths fashionable baths; a secluded media room; and a versatile room perfect for long-term storage and a wine cellar. Public spaces are filled with lovely light; and fixtures, finishes, and appliances are sleek and refined. Off-street parking for two vehicles is a welcome amenity in this prime location, walking distance from both the historic Plaza and Canyon Road.

Ray Rush
Tim Van Camp

seller's representatives

ray 505.984.5117
tim 505.984.5118

231 Washington Ave.
Santa Fe, NM 87501
505.988.8088

info@knowingsantafe.com
http://www.knowingsantafe.com

property summary

bedrooms	2
bathrooms	2 full 1 half
square footage	2,055 ft ²
acreage	0.0245 acres
mls number	201900179

Property

The property is located in a friendly neighborhood spot that is walking distance from the Plaza and Canyon Road. It has been tastefully landscaped in keeping with the home's contemporary aesthetic and includes a front courtyard with a portal and a small lower-level oasis just off the master bedroom. Off-street parking is a welcome amenity.



House

Trey Jordan — known for his innovative interpretations of traditional Santa Fe style — gave a modern spin to this Territorial condominium home, steps from the Plaza and Canyon Road on the Eastside. Sleek and stylish yet comfortable and inviting, the 2,106-square-foot interiors include a living area with a fireplace and portal, a well-outfitted kitchen, a main-level guest suite, and a master suite that occupies most of the lower level and includes an impressive room-sized closet and a media room with surround sound. A storage room equipped to hold wine and two-car off-street parking add to the appeal.



806 E. Palace Ave, Unit A:: 4

Entry Courtyard

The serene xeriscaped entry courtyard includes trees carefully positioned to maximize privacy as well as a cozy portal for enjoyment of this enviable Eastside location and Santa Fe's four beautiful seasons.

Living Room

Perfect for relaxed day-to-day living or stylish modern entertaining, the open, airy living room features lovely natural light from clerestory windows, blonde hardwood floors, a beamed ceiling, built-in speakers, and a clean contemporary corner fireplace beneath a skylight. It includes a spacious closet for coats and storage and opens through glass doors to a street-side portal overlooking the front courtyard. Steps lead to the kitchen.



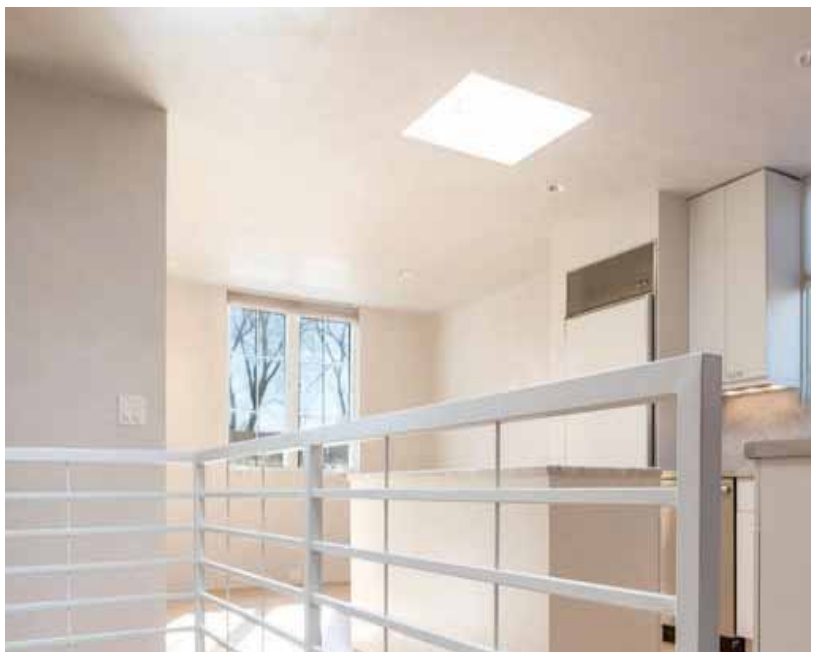
Kitchen

Just a step above the living area, the airy, light-filled kitchen exemplifies delightful contemporary style with its marble-topped island, sleek white cabinetry, stainless-steel counter tops, and appliances from Wolf and Sub-Zero. Storage is offered by a large pantry and open modern shelving.



Dining Area

A charming dining area overlooks the property and treetops through a wide paned widow.



Guest Bedroom

Peaceful and well appointed, the home's comfortable guest bedroom is located on the kitchen level and features warm hardwood floors, sunny windows facing in two directions, a well-outfitted closet, and a sophisticated en suite bath.



Closet

This thoughtfully appointed closet is part of the roomy guest suite, provides short- or long-term visitors with an array of storage options.



Bathroom

Spacious and stylishly finished, this contemporary en suite guest bath boasts a spacious vanity with marble countertops, a sunny picture window, and a tub shower with a glass door and eye-catching tilework.



Powder Room

Discreetly tucked off the kitchen and steps from the main living area, this convenient bath includes a modern vanity with an oversized mirror, stylish fixtures, and a skylight above.



Stairway

In the center of the home, blonde hardwood stairs with a chic white metal railing lead from the public spaces to a lower-level landing, the private master suite, and a media room and wine storage space beyond.



Master Bedroom

Cool, quiet, and serene, the master bedroom enjoys a peacefully secluded spot behind pocket doors on the lower level. The home's clean contemporary lines continue here, in concrete flooring, open book and art shelving, spot lighting, and sliding glass doors to a private outdoor space.



Master Bathroom

Open to the master bedroom but still quite discreet, the spa-inspired master bath is gently illuminated with natural light from three large windows and includes a lengthy two-sink vanity, a private water closet, a modern soaking tub surrounded by chic tilework, and a step-in glass-door shower lined with matching contemporary tile and including a unique shower seat.



Closet

Behind its own doors in the bath suite, this impressively spacious closet will be the envy of any clotheshorse. It contains two areas of thoughtfully chosen built-ins, including hanging racks of various heights, plentiful shelves, and drawers as well as a full mirrored wall.



806 E. Palace Ave, Unit A.: 13

Outdoor Living Space

Sliding glass doors in the master suite open to a very secluded small open-air space accented by rock and stucco walls, climbing vines, roses and other landscaping, and a section of coyote fencing. A concrete path leads to the front of the home, where a stairway links it with the entry courtyard, portal, and parking area

Laundry Room

The home's generous laundry room is conveniently located just steps from the master suite. It offers space for a stacking washer and dryer as well as handy counter space with shelving built in below.



Media Room

Tucked in a private lower-level corner of the home, this space is configured for use as a media room, with built-in surround-sound speakers and wiring for components.

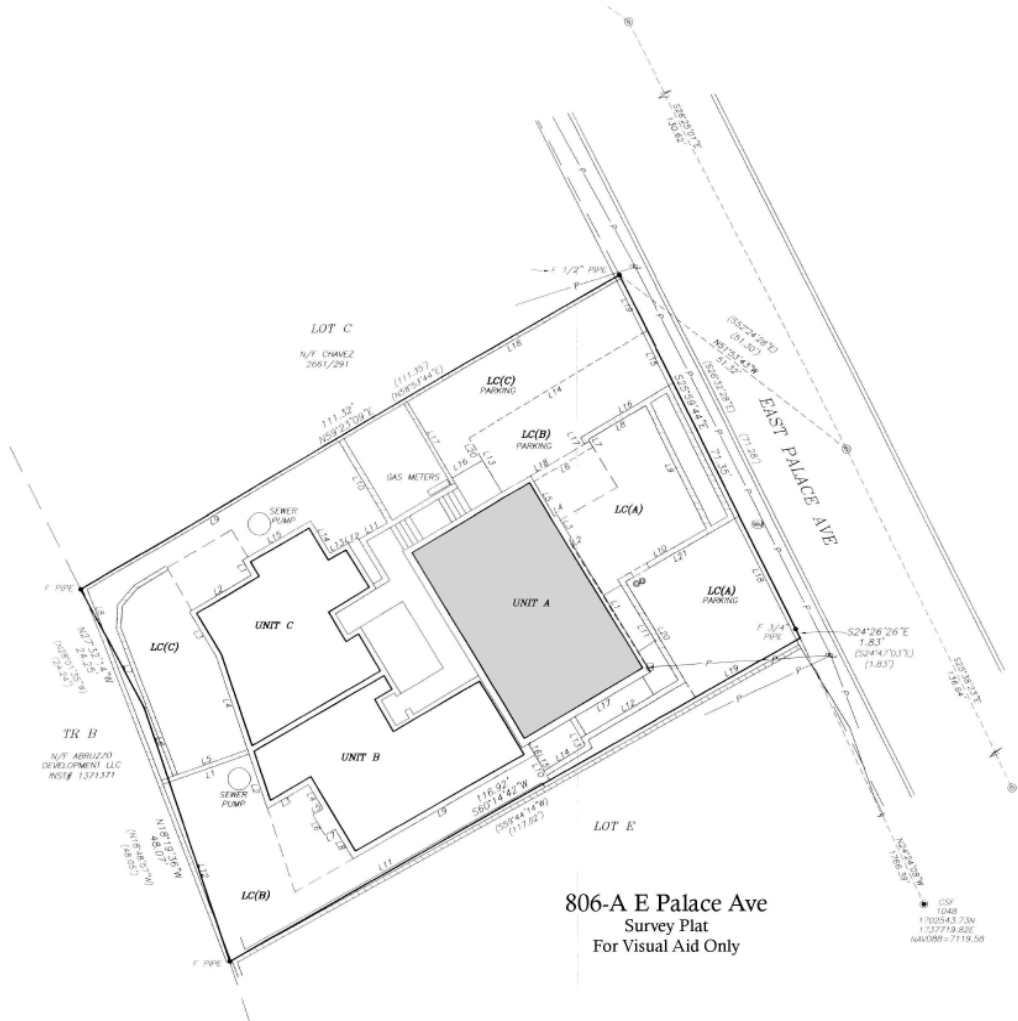
Small, well-positioned windows admit useful light without compromising ideal home theater conditions.



Storage and Wine Room

This out-of-the-way room offers space for cool lower-level storage of art, household items, and wine, for which it includes a built-in rack capable of holding more than 100 bottles.





Property Detail

bedrooms	2
bathrooms	2 full 1 half
square footage	2,055 ft ²
lot size	0.0245 acres
foundation	basement, slab
construction	block, frame, stucco, pumice/poured
roof	foam
year built	2007
builder	The French Master / Trey Jordan
flooring	concrete, wood
style	contemporary
heating distribution	radiant in floor
heating system	natural gas
waste	city
water	city
taxes	\$5,010.19 in 2017
hoa fees	\$212./mo
subdivision	Historic Eastside
mls number	201900179

No representations or warranties either express or implied are made as to the accuracy of the information herein or with respect to the usability, feasibility or condition of the property. Subject to change, sale or withdrawal without prior notice of any kind.