



## 319 Camino Encantado

Knowing Santa Fe

\$2,200,000

### Elegant Encantado Compound

In a coveted neighborhood just five minutes north of Santa Fe's historic Plaza—near the famed Santa Fe Opera and the prestigious thoroughfares of Circle Drive and Tano Road—this elegantly appointed estate includes a 5,197-square-foot residence and an 800-square-foot casita connected via a brick-paved breezeway. Filled with classical Santa Fe style, a respect for tradition, an attention to luxury, vibrant Southwestern hues, regionally fitting materials and finishes, and thoughtfully chosen contemporary conveniences, the home offers a grand central living, dining, and entertaining space with wonderful light and an inimitable view; an astutely outfitted kitchen with an accompanying breakfast area; multiple fireplaces—including a striking one built of stone located in the study—an office; and three bedroom suites secluded in owner's and guest wings. The serene owner's suite boasts a sitting area with a kiva fireplace, doors to a fountain courtyard, and a lavish bath. The casita's two bedrooms share a generous spa-like bath, and each has its own fireplaces and access to the outdoors. A courtyard, a portales, and acres of idyllic grounds allow for effortless enjoyment of the seclusion and singular style of a refined Southwestern retreat. The property also provides both covered and open parking.

Tim Van Camp  
John Rigatti

seller's representatives

tim 505.984.5118  
john 505.984.5141

231 Washington Ave.  
Santa Fe, NM 87505  
505.988.8088

info@knowingsantafe.com  
<http://www.knowingsantafe.com>

Sotheby's  
INTERNATIONAL REALTY

## Property

The estate's location is one of the city's most desirable, atop a tree-strewn hill where the prestigious thoroughfares of Circle Drive, Tano Road, and Camino Encantado meet. The acreage benefits from some of the most enviable views in Santa Fe—of city lights, rolling mountains, and sunsets.

All the delights of Santa Fe's unique environs can be easily enjoyed in a charming courtyard, on a picturesque portal, and beneath the sturdy beamed roofline of the breezeway.



## House

Spanning nearly 6,000 square feet, the main residence features three bedrooms in two very private wings, with warm, welcoming public spaces and a well-equipped kitchen at its heart. An alluring portal looks out over the grounds toward the majestic mountains. The office is a thoughtful convenience for today's work-from-home lifestyle.



## Entry Courtyard

A tree grows gracefully up through distinctive beams that top this home's enchanting entry courtyard. Ornate iron gates topped with barrel tile open to a path that leads to a welcoming portal with classic vigas and a wide wood door with sidelights.



## Foyer

The quintessential Santa Fe style is immediately introduced by the foyer, with its striking ceiling treatment featuring vigas and latillas, rosy plaster walls, stone tile floors, and an effortless flow through wide doorways.



## Study

A stalwart stone fireplace anchors this warm, welcoming, open space, which also features ceiling beams, deeply hued hardwood floors, and double glass doors to an enviable portal with mountain vistas.



## Kitchen

Spacious and well appointed, the kitchen features a large marble-topped island illuminated by a lengthy skylight, abundant cabinet space in a vibrant tone, and a full complement of top-tier stainless-steel appliances, including a Wolf range.



## Breakfast Room/Casual Dining

This sunny, cheerful space overlooks and opens to the portal and is steps from the kitchen. A corner kiva fireplace adds to the warmth.



## Den

In the den, wide windows admit wonderful light from the front courtyard. With its easy openness and convenient location near the kitchen and foyer, this would make an ideal space for an additional office or food preparation area or for greeting guests.





## Portal

Accessible from the study and breakfast room, this extensive outdoor living and entertaining area offers space for lounging and enjoying cool fresh breezes, cozying up beside the kiva fireplace, alfresco dining, and grilling—all while appreciating a truly a dazzling alpine outlook during any season of the year. Steps away is an enchanting garden area with a fountain.



## Great Room

Nearly a full wall of windows fills this impressive space with Santa Fe's famed natural light, accentuating its relaxed classicism. Beneath an eye-catching beamed ceiling, it welcomes with an Old World-inspired fireplace, built-in bookshelves, a dining area with a beautiful ornate chandelier, and plenty of space to unwind or celebrate.



## Powder Room

Centrally located near the primary entertaining spaces, the home's powder room is distinguished by its warm, artful detailing and discreet location.



## Primary Bedroom Suite

Both elegant and peaceful, this spacious bedroom suite includes a kiva fireplace, an inviting sitting area with built-in bookshelves, and a wide set of French doors opening to the grounds, where a calming fountain and built-in banco seating rest beneath a mature tree.



## En-Suite Bath

Beneath an oversized skylight, the gloriously lit bath is a spa-like space with striking countertops, a generous soaking tub, an impressively outfitted step-in shower, and abundant counter and storage space. Two water closets—one with a bidet—and heated towel racks are thoughtful extras.



## Office

Privately secluded behind rugged wooden doors is a quiet study with a built-in marble desk and countertop, richly hued storage cabinets, and invigorating light.



## Guest Bedroom One

Guests will appreciate the generous scale and cheerful ambience of this bedroom suite, tucked in a quiet two-bedroom wing. A wide sunny window and its own corner kiva fireplace contribute to the Santa Fe charm.



## Bathroom

This en suite guest bath has a rustic warmth, with surfaces of rich wood and earthy-hued stone accenting the vanity and the roomy step-in shower.



## Guest Bedroom Two

This equally inviting bedroom possesses a delightful style of relaxed refinement and lovely light from multiple windows. An elegant en suite bath is a thoughtfully discreet amenity.





## Bathroom

Featuring a tub and dual-head shower combination, the convenient en suite bath is equally stylish and well appointed, with classic fixtures, granite surfaces, handsome wood, and other fine finishes creating a timeless ambience.



## Laundry Room

This remarkably spacious laundry area offers ample cabinet, closet, and granite counter space as well as undercabinet lighting. With its sink, ice maker, and auxiliary refrigerator-freezer space, it can easily also serve as a butler's pantry.



## Breezeway

Living up to its name, the brick-paved breezeway offers covered parking space but is also ideal for an outdoor gathering—allowing for appreciation of wonderful breezes, fresh air, and views in the cool shade.



## Casita

Connected to the main residence by the refreshing breezeway yet very secluded and private, the 800-square-foot casita includes two distinct bedroom suites, each with an en suite bath and a set of glass doors opening to admit breezes and access the outdoors.



## Bedroom One

Ample enough to accommodate two beds, this carpeted sleeping space is filled with calm tones and a restful ambience. Santa Fe-style accents include ceiling beams and a cozy kiva fireplace.



## Bedroom Two

Cool and serene, the casita's second bedroom is a mirror of the first, with its own warming kiva fireplace, comfortable carpeting, a beamed ceiling, sizeable closet space, and a glass door offering lovely light and access to the brick-paved breezeway.



## Bathroom

The casita's vibrant, well-lit shared bath is appointed with a generous two-sink vanity with an oversized mirror along with both a tub and a walk-in shower.



# Floor Plan



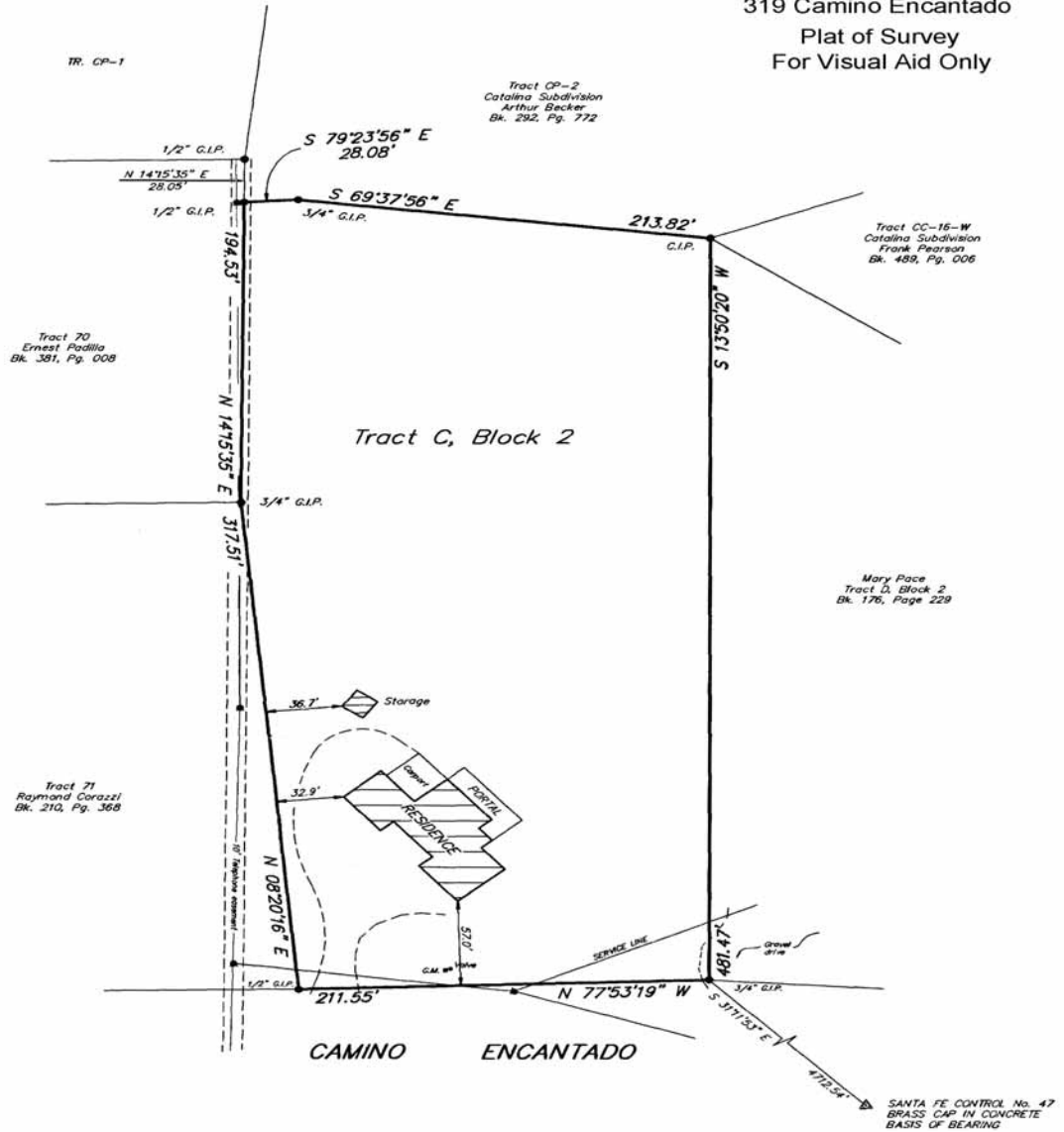
FLOOR 1

SIZES AND DIMENSIONS ARE APPROXIMATE, ACTUAL MAY VARY.



# Plat of Survey

319 Camino Encantado  
Plat of Survey  
For Visual Aid Only



# Property Detail

property summary	
bedrooms	5
bathrooms	4 full 1 half
square footage	5,197 ft <sup>2</sup> main 800 ft <sup>2</sup> casita
acreage	2.57 acres
style	pueblo
roof	tar & gravel
construction	frame, stucco
foundation	slab
heating system	natural gas
heating distribution	forced air
cooling system	refrigerative
cooling distribution	forced air
flooring	carpet, stone, tile, wood
gas	natural
water	city
electric	public
sewage	septic
subdivision	vista encantada
taxes	\$8,105.59 in 2021
mls number	202100765

No representations or warranties either express or implied are made as to the accuracy of the information herein or with respect to the usability, feasibility or condition of the property. Subject to change, sale or withdrawal without prior notice of any kind.