



984-C Acequia Madre

\$2,975,000

Knowing Santa Fe

Secluded, Stylish Eastside Compound

Exemplifying the singular subtle sophistication of Santa Fe, this stately historic adobe home and guesthouse are secluded on an enviable half acre in the heart of the historic Eastside. With its vigas, kiva fireplaces, distinctive details, architectural antiques, and colorful tile, the 5,169-square-foot, two-level main residence pays homage to the city's history and distinctive style while incorporating a wide variety of contemporary fixtures and amenities—including superior-caliber appliances and spa-inspired baths with oversized walk-in showers and soaking tubs. The chic living room features striking ceiling vigas and adjoins, through a wide eye-catching archway, a stately formal dining area with a wall of charming built-ins. Thoughtfully appointed and spacious, the light-filled kitchen offers abundant storage, a windowed breakfast area, and doors to an inviting portal and a patio perfect for lounging. Both bedroom suites—comparatively generous in size and appointments—are quiet, restful, and stylish. Completing the satisfying picture are a media room, an office, a sunroom, and a library. The 1,230-square-foot guesthouse enjoys its own living area with vigas, a fireplace, and gentle natural light from windows and skylights; a dining area; a kitchenette; a peaceful bedroom; laundry facilities; and a private breezy portal. The two homes are centered around an idyllic courtyard with emerald grass, a classical fountain, and mature landscaping. Each residence benefits from a secure gated entrance with a handsome brick drive, a dramatic porte cochère, and plentiful parking.

Tim Van Camp
John Rigatti

seller's representatives

tim 505.984.5118
john 505.984.5141

231 Washington Ave.
Santa Fe, NM 87505
505.988.8088

info@knowingsantafe.com
<http://www.knowingsantafe.com>

Sotheby's
INTERNATIONAL REALTY

Property

Each residence benefits from a secure gated entrance with a handsome brick drive and plentiful parking. A porte cochère with a dramatic bóveda ceiling offers a spot for covered storage of vehicles. The two homes are connected by flagstone paths and enjoy access to an idyllic private courtyard with swaths of emerald grass, water features, mature landscaping, and tall shade trees. The location is one of the city's finest, on a quiet Eastside lane just steps from Canyon Road and Patrick Smith Park.



House

Exemplifying Santa Fe's singular sophisticated style, this stately historic Eastside adobe home pays homage to the city's history and distinctive character while incorporating a variety of contemporary fixtures, features, and amenities—from superior-caliber appliances to spa-inspired baths with oversized walk-in showers and soaking tubs. The 5,169-square-foot, two-level floor plan includes a chic living room with striking ceiling vigas, a stately formal dining area with a wall of charming built-ins, a bright and spacious kitchen with abundant storage and a windowed breakfast area, a media room, a study, a library, and an inviting portal and patio perfect for lounging and dining. Both bedroom suites—comparatively generous in size and appointments—are quiet, restful, and stylish.



Entry Portal

This breezy portal is an ideal space to pause overlook the idyllic expanse of a colorful courtyard with tall trees, a water feature, and steppingstones. Classically detailed and paved in rugged flagstone, it gives way through screened double doors to the main home's entryway.



Foyer

With a coved ceiling and a rugged rock accent wall, this atrium-like entryway is a lovely light-filled introduction to the home's main living and entertaining areas.



Living Room

Featuring striking ceiling vigas, warm hardwood floors, and an eye-catching archway, the spacious living room encourages serene day-to-day living and sophisticated entertaining in true Santa Fe style.



Sunroom

Lined with glass-block windows and paved in herringbone-patterned brick, this bright, secluded space has a unique Old World-inspired water feature. Tucked off the living room, it is a sunny segue to the library.



Library

Rich wood bookshelves contribute to a studious ambiance in the library, a very quiet and hidden spot ideal for private contemplation.



Dining Room

Open to the living area via a dramatic archway, the handsome formal dining area includes a wall of charming built-ins. A wide set of windows admits wonderful light and overlooks the courtyard.



Kitchen

Thoughtfully appointed, spacious, and flooded with light, the kitchen offers abundant storage, a sizeable windowed breakfast area, a full suite of top-tier stainless-steel appliances, and an island with counter seating. French doors provide access to an inviting central courtyard.



Butler's Pantry

Any entertainer will appreciate the butler's pantry, which expands the kitchen space by offering additional cabinets, countertops, a bar sink, and a small refrigerator.



Courtyard

This enviable courtyard offers both cool, covered and sunny open-air spaces for relaxing, dining, and entertaining. A rare "walk-in" fireplace maintains enjoyable temperatures on cooler days and nights.



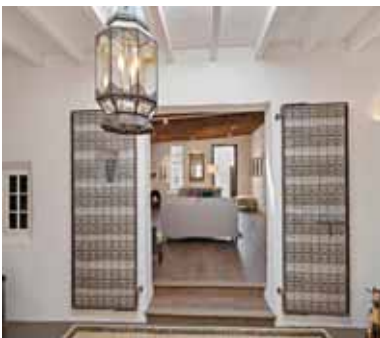
Powder Room

The centrally located powder room is a delightful space replete with updated Santa Fe style—whimsical colorful tilework, a unique stone sink, and striking punched metal fixtures.



Lounge

All the public areas radiate off the central skylit lounge, a bright space with a beamed ceiling, tile floors, and a variety of handsome wood doors.



Office

Tucked in a quiet spot off the central lounge is a peaceful office with a wealth of thoughtful built-ins, from a desk to cabinets, shelves, and drawers.



Media Room

The cool, cozy, casual media room is tucked off the lounge and features walls ideal for a wide-screen television or monitor, a kiva fireplace, and a striking beamed ceiling.



First Floor Bedroom Suite

Generous in size and appointments, this quiet, restful, and stylish bedroom features a beamed ceiling, hardwood floors, two windows admitting gentle light, and a sitting alcove. A luxurious bath is included en suite, and a door just outside the bedroom offers private access from the property.



Dressing Closet

A skylight fills this roomy closet with desirable natural light during the day. Three walls are outfitted with built-ins that include hanging racks, shelves, drawers, and a mirror.



Bathroom

This luxurious bath is handsomely appointed with stone tile and features tall windows, a soaking tub, a large step-in shower, and a warming corner kiva fireplace.



Stairway Area

This bright, lofty space is anchored by a gracefully curving stairway with a decorative iron railing and is lined on one wall with built-in storage cabinets.



Upper Level Bedroom Suite

Hidden at the top of a gracefully curving stairway with a decorative iron rail, the upper-level bedroom suite is a spacious and secluded and enjoys access to two private balconies—one covered, one open, and both offering lovely views across the treetops.



Closet

Hardwood floors and a sunny window create a delightful air in this dressing area and closet, outfitted with a wall of handsome built-in cabinet and storage space.

Closet

Warm, sturdy built-ins line the walls of the guest suite's second walk-in closet, tucked between the bedroom and the bath.



Bathroom



Laundry Room

Vibrant floor tiles lead the eye toward the breezy, bright laundry room, which includes counter and cabinet space and French doors opening to the grounds.



Porte Cochère/Carport

The estate includes a porte cochère with a striking bóveda-style ceiling. It creates a dramatic entrance but also provides a spot for covered storage of vehicles.



Guest House

The 1,230-square-foot guesthouse enjoys its own living area with vigas, a fireplace, and gentle natural light from windows and skylights; a dining area; a kitchenette; a peaceful bedroom; a luxurious bath; laundry facilities; and a private breezy portal overlooking the property.



Portal

This cool portal offers a private vantage point for enjoying the compound's idyllic grounds, including a mature shade tree and a classical fountain.



Living Room

Filled with classic Santa Fe style and gentle sunlight during the day, the chic guesthouse living area features vigas, its own warming fireplace, and space for a small dining table.



Kitchen

Entered from the porte cochère, the cozy kitchenette is cheerful and bright, featuring a skylight above classic vigas, a dishwasher, a built-in microwave, a sink, and generous counter and cabinet space.



Bedroom

Just off the living area and adjoined by a luxurious bath, this bedroom is a quiet, tranquil escape that visitors will appreciate.



Bathroom

Clad in earthy stone tile, this generous bath is a spa-inspired retreat with a walk-in glass-walled shower. Adjoining are thoughtful laundry facilities that include a hanging rack.

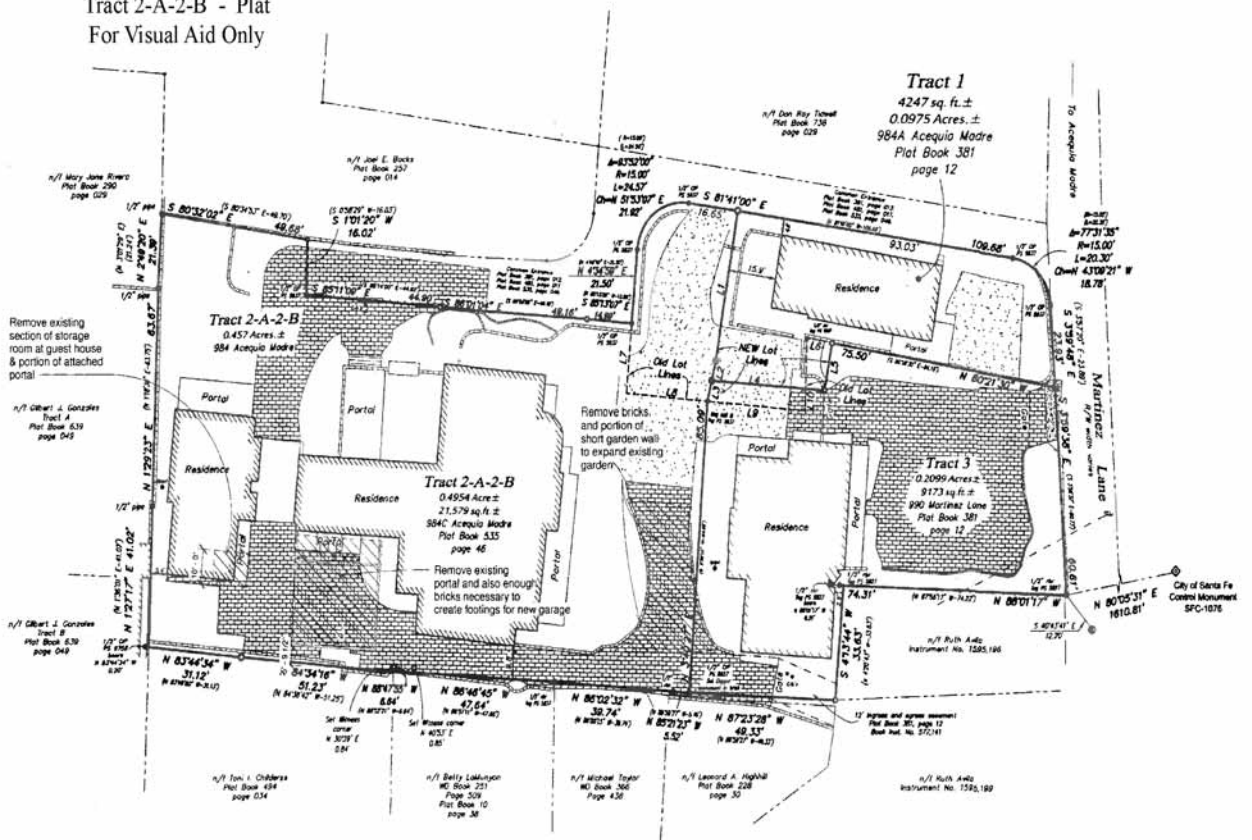




984-C Acequia Madre
 Floor Plan
 For Visual Aid Only



984-C Acequia Madre
 Tract 2-A-2-B - Plat
 For Visual Aid Only



Property Detail

property summary

bedrooms	3
bathrooms	2 full 1 three-quarter 1 half
square footage	5,169 ft ² main 1,230 ft ² guesthouse
acreage	0.5094 acres
style	pueblo
roof	flat, foam
construction	adobe, frame, stucco
foundation	slab
heating system	natural gas
heating distribution	radiant
cooling system	evaporative hall
cooling distribution	refrigerative, ductless a/c
flooring	stone, tile, wood
gas	natural
water	city
electric	public
sewage	city
subdivision	Eastside Historic
taxes	\$14,966.08 in 2020
mls number	202003691

No representations or warranties either express or implied are made as to the accuracy of the information herein or with respect to the usability, feasibility or condition of the property. Subject to change, sale or withdrawal without prior notice of any kind.