



33 Teddy Bear Trail

\$1,795,000

Knowing Santa Fe

Hilltop Oasis with Panoramic City and Mountain Views

On a private perch in the foothills southeast of downtown Santa Fe, this welcoming residence enjoys far-reaching views across the city toward mountains and sunsets in the distance. A winding paver drive winds upward toward the home, offering a separate parking area and leading to the generous three-car garage. Relaxed day-to-day living and grand indoor-outdoor entertaining are equally easy here, in a grand living and dining room with a fireplace and a soaring ceiling; a warm and inviting kitchen with an island, a breakfast nook; and a family room; a recreation room with a built-in bar and powder room; and an expansive portal with a built-in grill, a kiva fireplace, and one of the most envied views in the area, out across rugged New Mexico terrain and the city below toward the Jemez. A master suite that includes an office, a spacious spa-like bath, and a private arbored portal with mountain and sunset views is secluded in its own wing, while three guest suites are privately located on the upper and lower levels in the kitchen wing—one enjoying access to a roof deck perfect for appreciating mountain views or stargazing at night. A mudroom, built-in speakers, and plentiful storage complete the desirable picture.



Ray Rush
Tim Van Camp

seller's representatives

ray 505.984.5117
tim 505.984.5118

231 Washington Ave.
Santa Fe, NM 87505
505.988.8088

info@knowingsantafe.com
<http://www.knowingsantafe.com>

Sotheby's
INTERNATIONAL REALTY

Property

This home is sited on a secluded site enjoying all the privacy of a hilltop perch. A winding paver drive winds upward toward the residence and offers a separate parking area. The home is nestled into the land, surrounded on one side by mature juniper and piñon trees. The fabulous main portal and patio and the master suite's arbored portal look out across rugged New Mexico terrain and the city below toward the Jemez Mountains and sunsets in the distance.



House

On a private perch in the foothills southeast of downtown Santa Fe, this welcoming residence enjoys far-reaching views across the city toward mountains and sunsets in the distance. Relaxed day-to-day living and grand indoor-outdoor entertaining are equally easy here, in a grand living and dining room with a fireplace and a soaring ceiling; a warm and inviting kitchen with an island, a breakfast nook; and a family room; a recreation room with a built-in bar and powder room; and an expansive portal with a built-in grill, a kiva fireplace, and one of the most envied views in the area. A master suite that includes an office and a spacious spa-like bath is secluded in its own wing, while three guest suites are privately located on the upper and lower levels in the kitchen wing—one enjoying access to a roof deck perfect for appreciating mountain views or stargazing at night. A generous three-car garage, a mudroom, built-in speakers, and plentiful storage complete the desirable picture.



Entry Courtyard

Peppered with aspens and piñons, the front courtyard is a delightful introduction to the home, with a charming gate, tasteful landscaping, a flagstone path, and a small portal at the entry to the home.



Foyer

Inside two grand wood doors is the home's foyer, a stately introduction to the living spaces beyond. A double coat closet offers a variety of storage options, and just steps ahead, through an elegant archway with lighted display nichos, is the home's centerpiece, the magnificent living and dining room.



Great Room

Destined to be the site of many a festive celebration, the splendid main living area has a warm hardwood floors and ceiling with outside vigas that soars to an impressive height. A corner fireplace adds to the welcoming ambience, an area of built-in shelving and media cabinetry contributes charm, clerestory-style windows admit additional sunlight, and space for a dining table is afforded. A bank of windows and glass doors looks west, offering an extraordinary mountain view and opening to the wonderful portal.



Grand Portal

A highlight of the home, this portal wraps around the back of the home, facing the majestic Jemez Mountains and creating an outdoor living space that allows for nearly year-round enjoyment of Santa Fe's clean fresh air, pleasant temperatures, and spectacular sunsets. The view here is one of the most iconic in the city.



Powder Bath

Discreetly hidden steps from the living room and just outside the master suite, this powder bath is elegantly styled, with a granite vanity top and artful basin sink. A window facing the entry courtyard admits lovely light during the day.



Office

Just inside the master wing, this office, study, or sitting room is a versatile, thoughtful space that features hardwood floors, a coved ceiling with vigas, a corner kiva fireplace, and gentle natural light.



Master Bedroom

The secluded master bedroom has a feeling of airy elegance. The room is spacious and filled with light from west-facing glass doors that open to a private arbored portal and patio that links via a pathway to the main portal. Among its features are carpeted floors and a covered ceiling with vigas. A generous spa-like bath is steps away.



Closet

The remarkably generous master suite walk-in closet boasts his and her bays divided by a wall-mounted mirror. Each section is impressively outfitted with hanging racks, drawers, and shelves—including a tall bank of shoe shelves.



Bathroom

Spacious, elegant, and indulgent, the master bath is filled with luxuries, including a generous shower, nicely sized his and her vanities with handsome wood cabinetry, a private water closet, and the centerpiece, a soaking tub nestled in a south-west-facing windowed bay.



Portal

Just outside glass doors in the master bedroom, this serene spot was designed for private appreciation of mountain and sunset views. It is partially shaded by an arbor overhead and links via a pathway to the main portal.

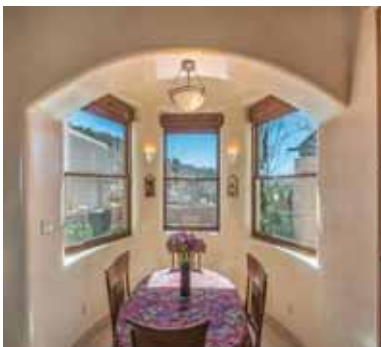


Kitchen

Classical granite covers the counters of the open, inviting kitchen, which also features handsome wood cabinetry—including a built-in bureau with wine-storage shelves—an island, and high-quality appliances. In a sunny windowed bay overlooking the front courtyard is a welcoming breakfast nook.



Breakfast Nook



Family Room

Open to the kitchen is a cozy family and media area. It features a timeless built-in wooden desk with shelving and cabinets but is also ideal for a media or sitting area. Conveniently, a glass door here leads out to the dining and grilling area of the portal.



Rec Room

Casual entertainment and day-to-day relaxation are easy thanks to the home's billiards and recreation room, which is tucked away off the kitchen, in a wing with two upper-level guest suites. Among its enviable features is a wet bar with cabinetry, shelving, a sink, and a built-in wine chiller.



Powder Bath

The powder room is a conveniently located, stylishly outfitted, and roomy bath thoughtfully incorporated into the game room area.

Laundry Room

The spacious, light-filled laundry room is discreetly hidden off the hall leading from the family room to the guest suite. It offers plentiful counter and cabinet space, a built-in ironing board, and a convenient drying rack.



Guest Bedroom 1

Visitors may never want to leave after time spent in this bedroom, which is warm and restful but also takes advantage of the home's spectacular views. For comfort, the floors are carpeted, the ceiling has vigas and a fan, and a kiva fireplace occupies one corner. A glass door offers a view of the mountains to the southwest and accesses a private portal for enjoyment of the outdoors and magnificent views.



Closet

Many useful storage options, from hanging racks to shelves, have been supplied in this thoughtful walk-in closet, which is included en suite and has automatic lighting.



Bathroom

Guests will appreciate this spacious, elegant bath, with its roomy granite-topped vanity and generous shower, which has a glass door and subtly stylish tile accents. A picture window facing into the hillside admits gentle natural light.



Guest Bedroom 2

A comfortable charm pervades this bedroom, a private sanctuary tucked at the top of the stairs. It has carpeted floors, a ceiling fan, and numerous windows admitting views and wonderful light.

Closet

Thoughtful built-ins—shelving, drawers, and multiple hanging racks—afford a wide array of storage options in this moderately sized walk-in closet.



Bathroom

Very private and minimally elegant, this bath is clad in stone tile and includes a skylight, a vanity with storage cabinetry, and a step-in glass-door shower.



Guest Bedroom 3

Spacious and based on intriguing angles, this guest bedroom is an airy retreat with comfortable carpeting, a ceiling fan, and a sliding glass door offering private access to the home's rooftop deck.



Bathroom

Roomy and filled with light, this stately bath has stone tile floors, a single-sink vanity with handsome wood cabinetry, and a generous tiled shower with a glass door. A window offers views of the mountains and sunsets to the southwest.



Mud Room

Flooded with sunlight during the day, this 17"x 5'2" area offers a segue to the garage but also a separate, more informal entrance to the home from the front courtyard. The tile floors are easily maintained.



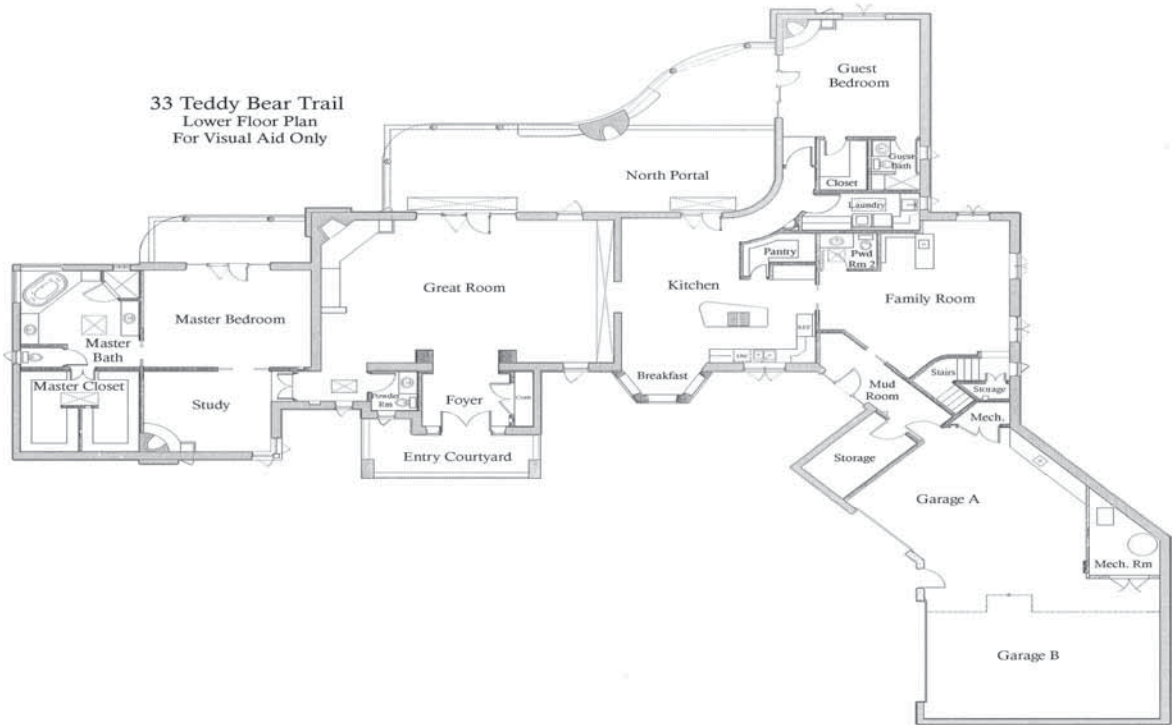
Garage

With two doors and space for three vehicles, the finished garage is impressively spacious. It also affords room for auxiliary appliances, a workshop area, and abundant storage.



Floor Plans

33 Teddy Bear Trail
Lower Floor Plan
For Visual Aid Only



33 Teddy Bear Trail
Upper Floor Plan
For Visual Aid Only



Property Detail

bedrooms	4
bathrooms	1 full 3 three-quarter 2 half
square footage	5,200 ft ²
garage	3-car attached, (1,400 ft ² heated)
lot size	5 acres
built	2004
foundation	slab
construction	frame, stucco
roof	flat, foam
flooring	carpet, tile, wood
style	pueblo
heating distribution	gas, radiant
heating system	natural gas
gas	natural
waste	septic
water	well, private
taxes	\$6,461.88 in 2017
hoa fees	\$1,200+/- yearly (includes road maintenance; snow removal; and insurance on directors & common area)
subdivision	kaufman-smith
mls number	201800870

No representations or warranties either express or implied are made as to the accuracy of the information herein or with respect to the usability, feasibility or condition of the property. Subject to change, sale or withdrawal without prior notice of any kind.