



# 27 Lodge Circle

Lot 11, Bishops Lodge Hills

Knowing Santa Fe

\$575,000

## Spectacular Views!

Discover the perfect canvas for your dream home in the Bishops Lodge Hills subdivision. This 1.54-acre gem offers a unique opportunity to build your Santa Fe sanctuary with breathtaking northern and western vistas, all within a gated community just minutes away from the vibrant heart of downtown Santa Fe. Bishops Lodge Hills provides easy access to shopping, dining, and cultural attractions. It's the perfect balance of serene rural living and urban convenience.

Tim Van Camp  
John Rigatti

seller's representatives

tim 505.984.5118  
john 505.984.5141

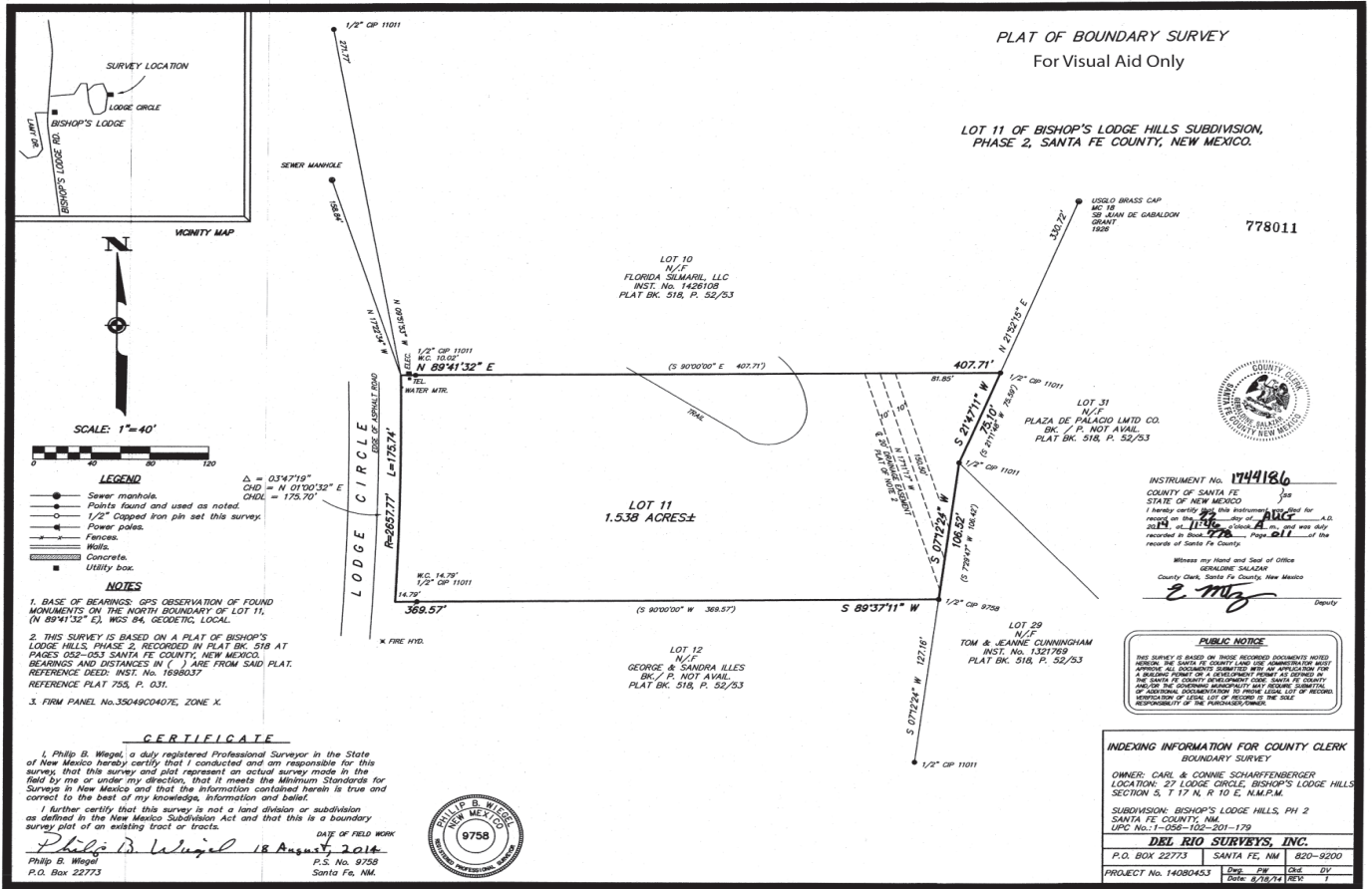
231 Washington Ave.  
Santa Fe, NM 87501  
505.988.8088

info@knowingsantafe.com  
<http://www.knowingsantafe.com>

**Sotheby's**  
INTERNATIONAL REALTY

### property summary

acreage	1.54 acres
electric	public
sewage	community
water supply	community
hoa fees	\$665/quarterly
mls number	202341208



No representations or warranties either express or implied are made as to the accuracy of the information herein or with respect to the usability, feasibility or condition of the property. Subject to change, sale or withdrawal without prior notice of any kind.