



## 29 Jacona Road

\$1,985,000

KNOWING SANTA FE

### Idyllic Countryside Getaway: Adobe Oasis in Jacona

A property of this caliber very rarely becomes available. Beautifully sited on more than five acres in one of Santa Fe's most desirable areas, the classic four-bedroom main residence, designed by John Gaw Meem, epitomizes the distinctive charm and relaxed elegance of Santa Fe. It offers a rare combination: the scale and style of a grand estate and the warmth and charm of a comfortable private home. Highlights include perfectly proportioned living and dining areas, a fabulous kitchen and family room, a serene master suite, three additional bedrooms and baths, an exceptional recreation room, and a roof deck with a breathtaking panorama. Brick and hardwood floors, hand-detailed woodwork, kiva fireplaces, and striking ceiling treatments — including beams, vigas, corbels, and latillas — grace the interiors. Tall windows and French doors allow for easy appreciation of the magnificent grounds. Also on-site are two charming guesthouses, one of which includes a greenhouse and could easily function as a caretaker's residence.

Ray Rush  
Tim Van Camp

seller's representatives

ray 505.984.5117  
tim 505.984.5118

231 Washington Ave.  
Santa Fe, NM 87501  
505.988.8088

info@knowingsantafe.com  
<http://www.knowingsantafe.com>

mls number 201502321

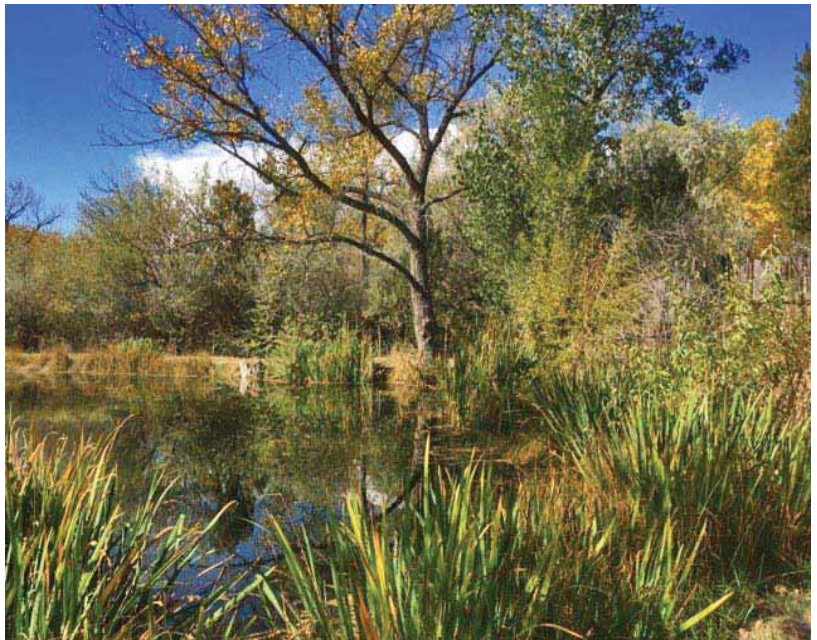
Sotheby's  
INTERNATIONAL REALTY

## Property

In the rural countryside of Jacona, en route to Los Alamos, this lush, romantic 2.454-acre estate is a secluded private oasis.

An acequia runs through the property, and a secluded pond is located at one end, contributing to the land's greenery and idyllic character. The acreage is dotted with enchanting gardens and grassy lawns, and mature trees of all sort tower overhead.

Water rights are included.



## Kitchen House

Enclosed within its own courtyard walls, this building is one of five distinctive adobe structures located on the property. It houses a fabulous modern kitchen, a chic living and dining room, a sitting room, and a bath. Behind the home is a luxuriously shady portal overlooking a gloriously green lawn and a brick patio.



## Kitchen

The relaxed rustic nature of the estate belies the inclusion of this impressive, exceptionally outfitted contemporary kitchen. Any chef will appreciate the Wolf six-burner range with hood, the side-by-side stainless-steel Sub-Zero refrigerator-freezer, the double wall ovens from Dacor, the corner kiva fireplace, mossy-green granite countertops, and plentiful storage space, including charming glass-front cabinets and an office nook. A soaring ceiling with dramatic beamwork, a lengthy skylight, and wide-plank hardwood floors create an appealing ambience here.



## Living / Dining Area

This cool, elegant space encompasses a living and dining areas. An art wall including a fireplace partially separates this area from the kitchen, creating spatial distinction. Among the other stylish features are a corner wood-burning fireplace, wide planked wood floors, warmly hued walls, a long skylight, and a tall ceiling with rugged split beams from Las Trampas. Deep-set windows overlook the deep shady portal.



## Portal and Patio

In the main living area, a wide door opens to this cool, alluring spot, which expands the options for indoor-outdoor living, looks out over an incredibly lush courtyard lawn with a tall tree and sunny brick patio. Draped by a mature wisteria vine and bordered by manicured hedges, it feels secluded and relaxed and allows for quiet enjoyment of fresh air and cooling breezes.



## Sitting Room

Ideal for use as a reading room, a media room, or a comfortable bedroom, this space has a relaxing ambience, warm wall hues, vintage wood details, an antique storage cabinet, a skylight, and two armoire-style closets with vintage carved wooden doors with a “bunk” above them. A spacious bath with a shower is adjoining. The grill in this room is from Hearst Castle.



## Storage Room

Tucked between the antique armoires is a door to a “secret” storage room with built-in shelves and overhead lighting, designed for long-term storage.

## Bathroom

With its abundant colorful Talavera tile, this spacious bath is soothing and full of charm. It includes a long vanity with a single sink, a roomy glass-door shower, and multiple rustic wood storage cabinets.

## Sleeping House

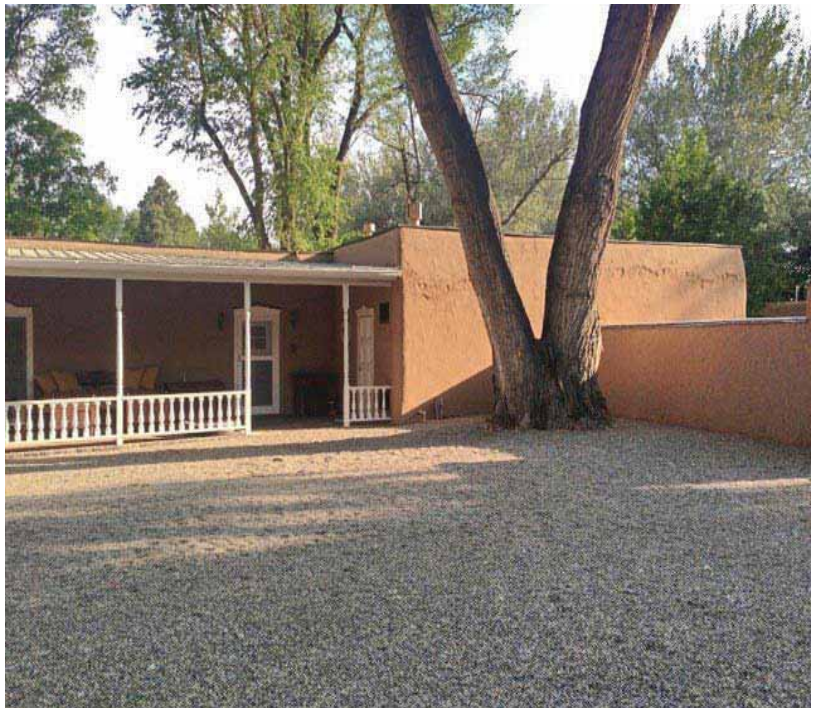
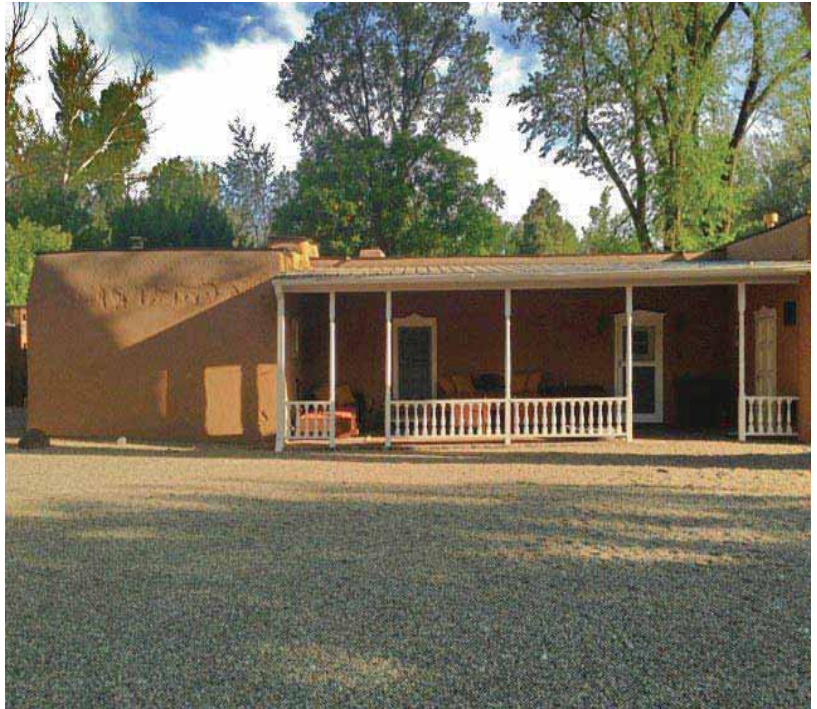
One of five distinctive adobe buildings located on the property, this structure houses two full bedroom suites with baths and walk-in closets as well as a shared living area. The front of the home is lined with a portal that faces a grand entry courtyard paved in gravel. Behind the home lies a gloriously green lawn and colorful mature gardens.





## Portal

Sweeping along the front of this structure is a regal portal, the perfect introduction to the classical northern New Mexico style that this estate embodies. The cool, shady spot features handsome brick, vigas, and “gingerbread” trim. A wide wooden door with Territorial detailing opens to the main living area.



## Master Bedroom

At the end of the hallway, beyond the master bath, lies the serene master suite. This is a relaxing haven that features a warming corner fireplace, hardwood floors, two ample walk-in closets, and French doors to a sunny patio and the home's gorgeously lush lawn and garden.



### Walk-In Closets

These two open walk-in closet have been extensively appointed with a number of fittings, including racks of various heights, shelving, built-in bureaus, and wall-mounted mirrors. One closet includes an in-wall safe.

## Master Bathroom

Dramatic but serene, the two-part master bath is lavishly appointed with an array of relaxing amenities, from a spacious glass-enclosed shower with vibrant tilework and an extensive granite-topped vanity with abundant drawers and cabinets and a lengthy mirror. Sited on the opposite side of the hall for maximum privacy is an oversized soaking tub, perched beneath a soothing skylight and surrounded by colorful decorative ceramic tile.



# Sleeping House

## Living Area

During the day, this relaxing living space is full of light and enjoys a verdant view of the lawn through French doors. It combines old and new features, from a classic fireplace, vintage vigas, and burnished paver floors to new wood paneling, bookshelves, and a discrete, convenient cabinet for storing a microwave and small refrigerator.

## Bedroom

This cozy, comfortable bedroom, tucked at one end of the home, is designed for private relaxation. Ceiling beams, brick flooring, and a fireplace add to the charm. Glass doors open to the verdant patio and lawn, and a skylight augments the lovely natural light. A full bath is included en suite, and storage space — a full walk-in closet — is cleverly hidden behind a wood-paneled door.

## Closet

Within the bedroom, this thoughtful walk-in closet is appointed with an array of shelving and drawers. A picture window admits gentle natural light.

## Bathroom

This sunny private bath features new stone tile, a cherrywood vanity with a granite countertop, and a roomy tub shower with a sliding glass door and colorful tile.

## Laundry Room

Centrally located, the home's convenient laundry area has been thoughtfully appointed with new built-ins, a sink, a wall of open shelves for storage, and handsome stone tile flooring.

## Free Standing Office/Guest Cottage 3

Used by the current owners as an office, and one of the five distinctive adobe buildings located on the property, this charming cottage is tucked beneath a towering tree. It could function equally well as a studio, or additional guest quarters.



### Main Room

The artist, writer, or reader will appreciate this roomy, airy space, with its soaring ceiling, extensive built-in shelving, wonderful light, corner fireplace, and kitchenette that includes counter and cabinet space and a small refrigerator. A door opens to a relaxing screened-in porch.

### Bathroom

Full of stylish modern appointments, the compact bath includes handsome herringbone-patterned brick flooring, a glass-enclosed shower with travertine walls, a single-sink vanity with marble countertop, and handy wood cabinets for extensive storage.

### Screened Porch

Ideal for appreciating cool breezes, idyllic views, and summer rainstorms, this patio is fully enclosed in screen and features handsome brick flooring and charming Victorian-style detail work. The vista from here encompasses tall trees, glorious flowers, an orchard, and the rolling neighboring farmland.

## Studio/Guest Cottage 2

Used by the current owners as a studio/office, and one of the five adobe buildings located on the property, this charming two-room cottage has a three-quarter bath and could function equally well as an additional guest quarters.

### Sitting Room / Bedroom

Serene and secluded, this space is accompanied by a bath and could function as a sitting room or bedroom. It includes a cushioned banco set beside a wide window that overlooks the grounds and a well-lit alcove outfitted with built-in bookshelves.

### Bathroom

This convenient, secluded, spacious features colorful ceramic tile, rustic-style cabinetry, a shower, and traditional hardware and fixtures.

### Carport

Attached to this cottage is a convenient carport, which includes space for at least one vehicle as well as storage of various estate-related items and equipment.



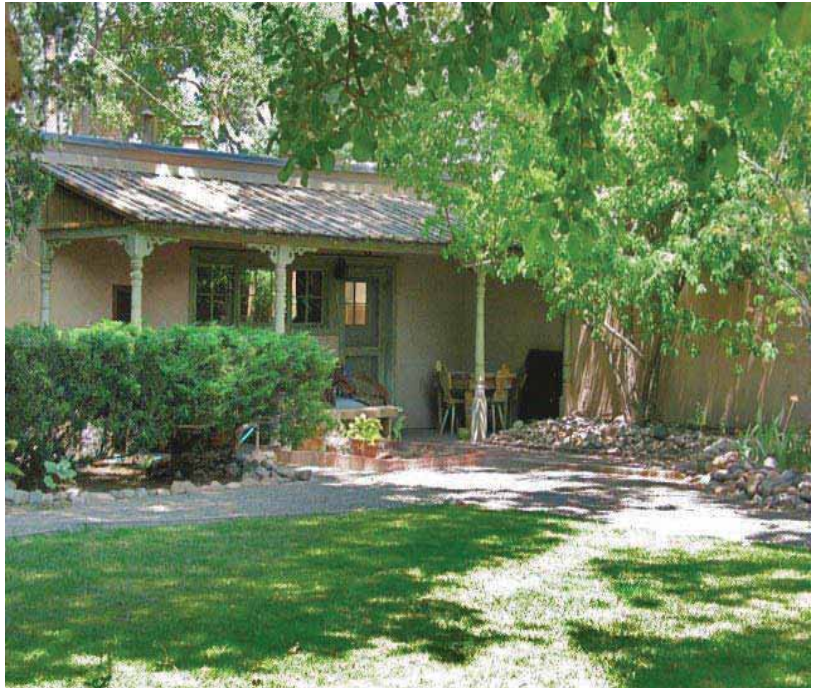
### Living / Kitchen Area

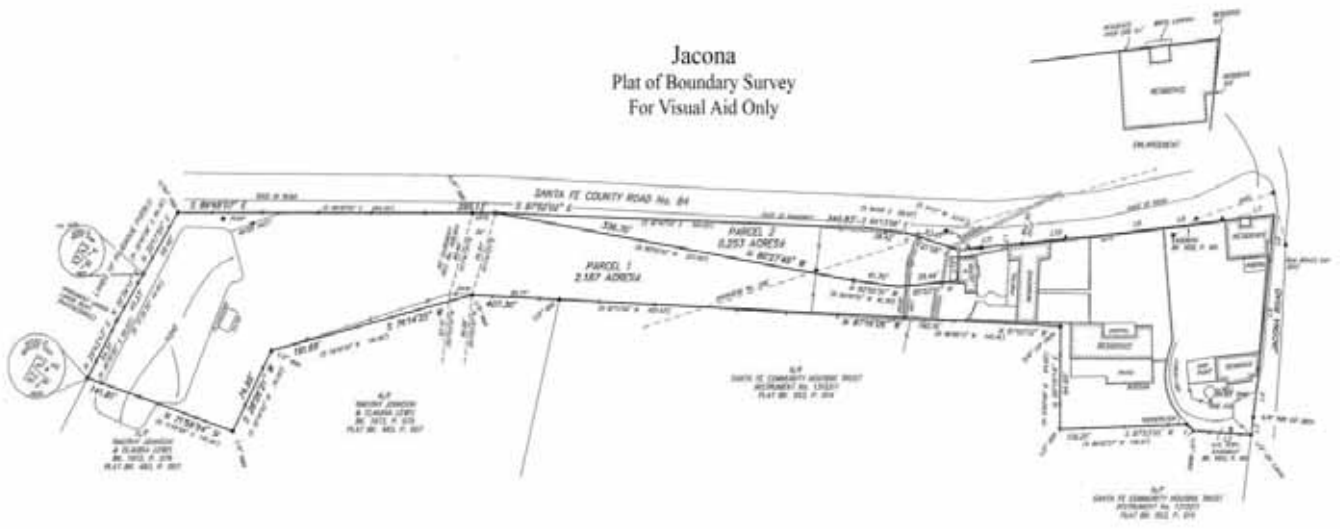


A sloped roof with rugged wood beams and flooring reveals the rich history of this space. The comfortable, quiet room features sunny clerestory windows, a corner kiva fireplace, charming wood and punched-tin cabinetry and shelves, and a kitchenette with Talavera tile accents and a small four-burner range. Along the opposite wall, a stylish modern desk ensemble with drawers and cabinets has been built in.

## Guest Cottage

Full of regional charm, this two-bedroom residence would make an ideal space for a caretaker or visitors. A lengthy portal with Victorian-style “gingerbread” trim is ideal for relaxing while appreciating the impressively colorful gardens and grounds. The home includes a kitchen with a breakfast nook, a living area with a fireplace, and two cozy bedrooms, one of which accesses a secluded brick patio beneath a tall shade tree.







# Property Detail

property summary	
bedrooms	5
bathrooms	2 full 4 three-quarter
garage	1 (carport)
square footage	3,350 ft <sup>2</sup> main 487 ft <sup>2</sup> free standing study 863 ft <sup>2</sup> 2 room study w/kitchenette 1,282 ft <sup>2</sup> 2 bedroom guest house
acreage	2.454 acres
style	pueblo
roof	flat, metal, pitch, tar & gravel
construction	adobe
heat distribution	baseboard,, hot water, radiant
heating system	electric, gas,
waste water	septic
water source	well - private
year built	1940's
mls number	201502321

No representations or warranties either express or implied are made as to the accuracy of the information herein or with respect to the usability, feasibility or condition of the property. Subject to change, sale or withdrawal without prior notice of any kind.