



449 Camino Monte Vista

Knowing Santa Fe

\$1,250,000

Easy walking distance from the historic Plaza and the other attractions and amenities of downtown Santa Fe, this rare, enviable nearly three-quarter-acre property with RC-5 zoning offers gently rolling terrain, mature trees, an easy building site, and a private well, making it ideal for a private compound. In a prime location surrounded by quiet classic homes on the Eastside, it enjoys a full sweeping vista of enveloping mountain ranges and New Mexico's famous blue skies.

Tim Van Camp
John Rigatti

seller's representatives

tim 505.984.5118
john 505.984.5141

231 Washington Ave.
Santa Fe, NM 87501
505.988.8088

info@knowingsantafe.com
<http://www.knowingsantafe.com>

property summary



acreage	0.723 acres
taxes	\$2,129.57 in 2022
water source	private well
hoa fees	N/A
map page	2016 Horton 37 A-2
mls number	202338891

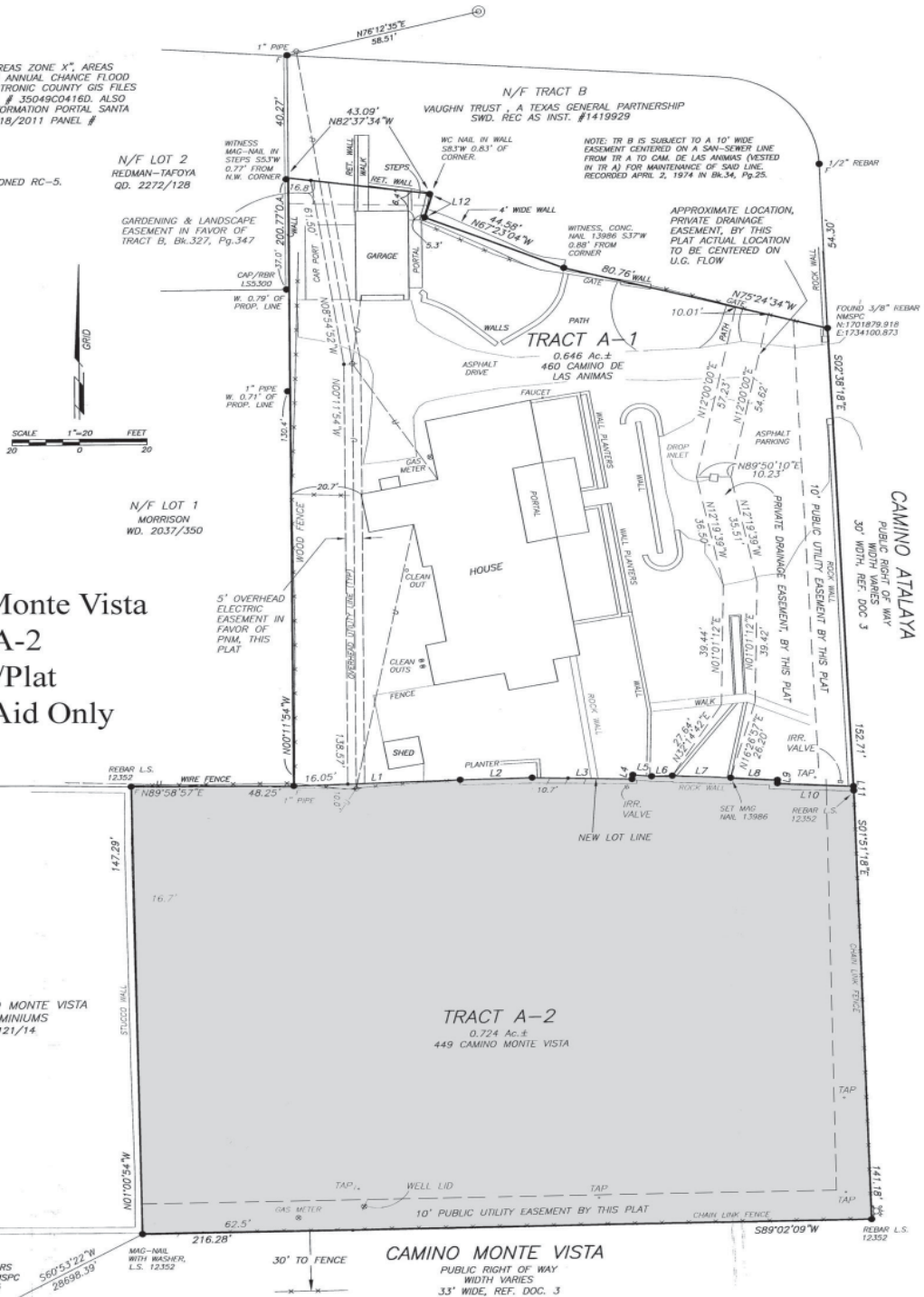
Sotheby's
INTERNATIONAL REALTY

FLOOD_ZONE

THIS PROPERTY LIES WITHIN "OTHER AREAS ZONE X", AREAS DETERMINED TO BE OUTSIDE THE 0.2% ANNUAL CHANCE FLOOD AS GRAPHICALLY DEPICTED FROM ELECTRONIC COUNTY GIS FILES AND DFIRM ISSUED 6/17/2008 PANEL # 35049CD416D. ALSO REFER TO FEMA RISK MAP, FLOOD INFORMATION PORTAL SANTA FE NM PRELIMINARY DFIRM ISSUED 2/18/2011 PANEL # 35049CD416E(2011-02-18).

CURRENT_ZONING

THESE PROPERTIES ARE CURRENTLY ZONED RC-5.



449 Camino Monte Vista
 Tract A-2
 Survey/Plat
 For Visual Aid Only

TO DAWSON SURVEYS INC. CORP
 BASE STATION "DAWSON2"; NMSPC
 N1687626.870, E1708833.475

No representations or warranties either express or implied are made as to the accuracy of the information herein or with respect to the usability, feasibility or condition of the property. Subject to change, sale or withdrawal without prior notice of any kind.