



522 Calle Corvo

\$1,650,000

KNOWING SANTA FE

Unique Eastside Haven with a Contemporary Aesthetic

The Southwest façade belies a contemporary aesthetic within this singular enclave, a stroll from Canyon Road and the Plaza. High walls, punctuated by classic gates, enclose the distinctive landscape. Reimagined by current artist/designer owner with architect John Midyette, this vintage property now embodies a contemporary flow. The living room, library, dining room, and kitchen radiate from the entrance gallery. Beyond are a double office and the master suite which accesses a secluded portal. The guest suite is located off the reverse side of the core. A huge sun room serves as an art studio, exercise area, and TV lounge. With doors to north and south garden areas, the space suits myriad purposes.

Completed in 2010, the contemporary environment is punctuated by selectively restored vintage vignettes. Japanese floor tiles create a visual flow throughout. Convenience and abundant storage were well considered in developing the distinctive aesthetic. Evident everywhere, respect for design integrity was integral to the creative process.

Mature trees enhance the private grounds that otherwise have been completely reconfigured and developed into unique areas. Gravel surfaces access sculptures, a rock installation, and various seating configurations: The largest flows around a notable stacked slab table; another is focused on a fire pit/table. The regal maple tree shades a special space. A sheltered portal provides dining, lounging, and storage areas.



Ray Rush
Tim Van Camp
John Rigatti

seller's representatives

ray 505.984.5117
tim 505.984.5118
john 505.984.5141

231 Washington Ave.
Santa Fe, NM 87501
505.988.8088

info@knowingsantafe.com
<http://www.knowingsantafe.com>

Sotheby's
INTERNATIONAL REALTY

Property

High privacy walls curve around the property with a subtle sculptural effect that is extended to bancos, nichos, art installations, and refuge and mailbox areas. Mature trees enhance the grounds that otherwise have been totally reconfigured and developed into unique areas. Beyond the entrance paths, gravel surfaces access sculptures, a rock installation, mirror installation, vintage mesquite table, and various integrated seating and dining areas. The largest is tiered, extending from a corner curve and balanced by unique individual pedestals. A singular stacked slab table centers the area. Another integrated banco area, accented by nichos, curves along a custom fire pit. The protected back portal provides a cozy banco, storage and counter spaces, and a dining table area. The enormous maple shades a circle of butterfly chairs.



House

The Southwest facade belies a contemporary aesthetic within this singular enclave. Re-imagined by the current artist/designer owner with architect John Midyette, this vintage property now embodies a contemporary flow. Completed in 2010, the extensive remodel encompassed reconfigured and renewed walls, windows, doors, floors, ceilings, kitchen, baths, laundry, and portals. Radiant heating was installed throughout. Integral sound system, alarm system, and lighting systems were installed. Japanese floor tiles establish a distinctive flow throughout the interior. Excepting two hinged doors considered for privacy, the sun room, master bedroom, master bath, laundry-utility, and guest suite bath are fitted with pocket doors. Entrance gallery, living room, dining room, library, and kitchen function as open yet subtly distinct spaces.



Entry Courtyard and Portal

Accessed through classic front or side gates, a graveled courtyard is traversed via graceful stone paths. The minimally xeriscaped area is enhanced by sculptures and artfully sited yuccas. A distinctive tile floor distinguishes the spacious portal. An inviting seating area is punctuated by the vintage entrance door.



Entrance Gallery

The minimal design and contemporary 'visual comfort' that characterize the home are introduced here. The first of many skylights, the white walls and white tile floor, integrated storage banco, and artfully configured nichos, together serve as background for display of art and artifacts.



Living Room

Enter via two wide/deep stairs that double as extra party seating. Lighting has been integrated into the vigas that cross this space. A cushioned banco flows around a corner. The bold contemporary gas fireplace angles dramatically into the space. The long wall has provided an integral display shelf, built to extend the irregular center recess that remained when the original fireplace and chimney were removed. A French door has been installed to access the north courtyard area. Integrated sound system here.



North Courtyard

An enormous maple tree centers this space, surrounded by seating and complimented by an imposing old mesquite table and a rock installation. On the far side a large integral seating area surrounds a distinctive stacked slab table.



Dining Room

Skylights, along with lighting that was integrated into the vigas, provide extra brightness. The large integrated buffet was designed to provide storage and surface space. Track lighting flows from kitchen to library, providing more lighting options on the way. Integrated sound system here.



Powder Room



Library

The Japonesque aesthetic is subtly acknowledged in the wall of shelves that defines this area. The open and inviting alcove space projects a distinctive ambiance.



Guest Suite Bedroom

In the private guest suite, secluded from the open areas of the home, a short hallway accesses the bedroom. In a geometric design, storage drawers are built into one area, and closets are resourcefully concealed behind minimalist panels along another. A distinctively modern ceiling fan and light matches another in the master bedroom. The configuration of nichos was designed to acknowledge design tradition.



Guest Bathroom

Contemporary minimalist styling prevails in the skylight-bright bath. Mirrors extend the large unique Corian-topped corner vanity design. The spacious shower area echoes the master bath design.



Kitchen

The distinctive design aesthetic prevails in the spacious skylit kitchen, with Corian-topped custom cabinetry and center island. Appliances were faced in white when feasible, providing visual continuity. A wine cooler is integrated into island storage. A unique double-sided storage piece displays serving ware, while the reverse is discretely configured as a pantry.



Kitchen



Laundry Room

Secluded from the kitchen by a pocket door, an environmentally friendly, discreet, and clever air-drying design augments laundry equipment. Storage is configured to accommodate cleaning and laundry needs.



Sunroom

A huge sun room extends along the rear of the house. Now used as an art studio, exercise space, and TV lounge, the space suits myriad potential purposes. Along the inside wall are a sink and extensive custom shelving and cabinetry. Track lighting system was installed on beams below a traditional ceiling, in acknowledgment of aesthetic traditions. Doors at far ends access adjoining garden areas.



Rear Patio

The Sunroom directly accesses the tree-sheltered area that opens to an integral banco space and custom fire pit. A configuration of small nichos references traditional design.



Office

Between dining room and master bedroom, this space was reconfigured as an office. It was designed to provide dual integrated desk spaces, shelving, and storage. Acknowledging the home's Southwestern heritage, a timeless kiva fireplace remains. The nicho wall was conceived as an aesthetic connection. Integrated sound system here.



Master Bedroom

A pocket door denotes the serenity that characterizes this quiet corner of the house. Vigas display the same ceiling fan/light design as the guest bedroom. A large storage wall subtly merges styles. The distinctive bath and discreet closet area adjoin, as well as the covered rear portal. Integral sound system here.



Master Closet



A large integral mirror cleverly defines and secludes the adjoining closet area, configured to provide generous hanging and shelving options.



Master Bath

This distinctive space merges utility and aesthetics in the predominant minimal style.

Above the Corian surfaced double sink a unique mirror system conceals extensive storage. Below is a configuration of subtly suggested Japonesque storage spaces. Additional storage cabinets are minimalist statements. The sculptural soaking tub with floor-mounted fixtures is a focal point. A custom walk-in shower echoes the guest shower design.



Rear Portal

This private covered area provides a cozy banco, storage and counter space, and a dining table area beneath the fan/light design installed in the bedrooms.



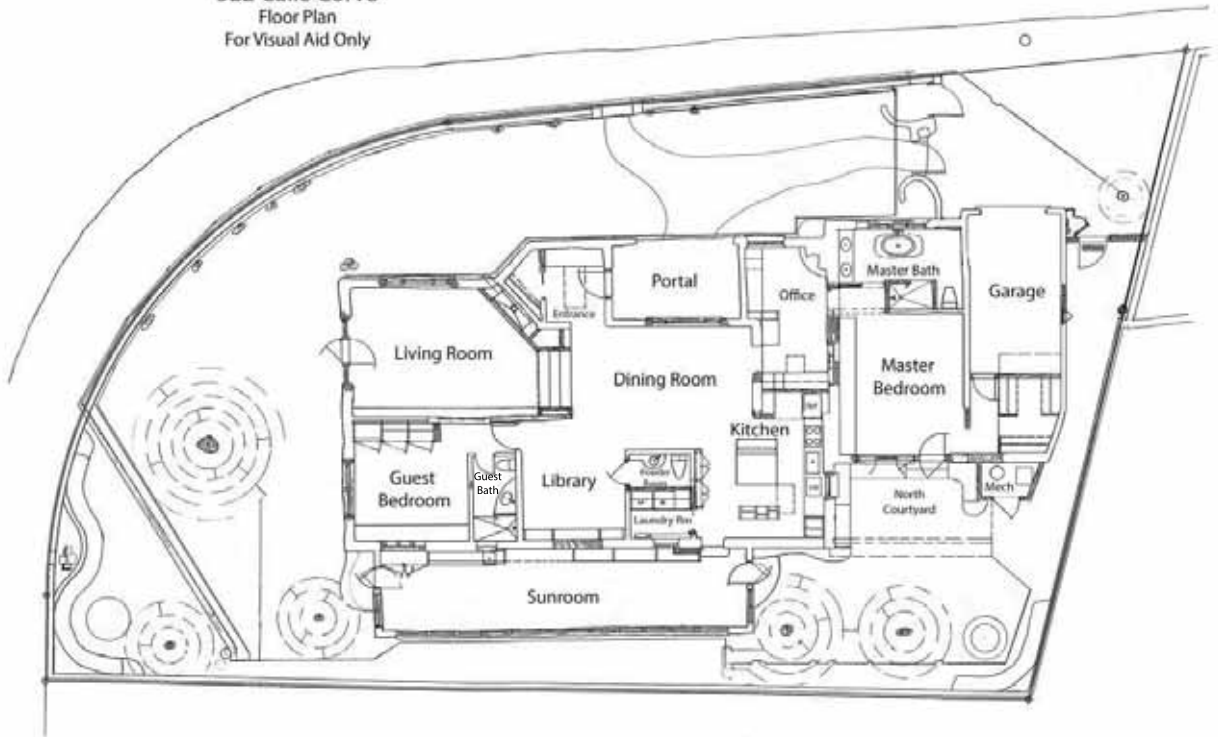
Garage

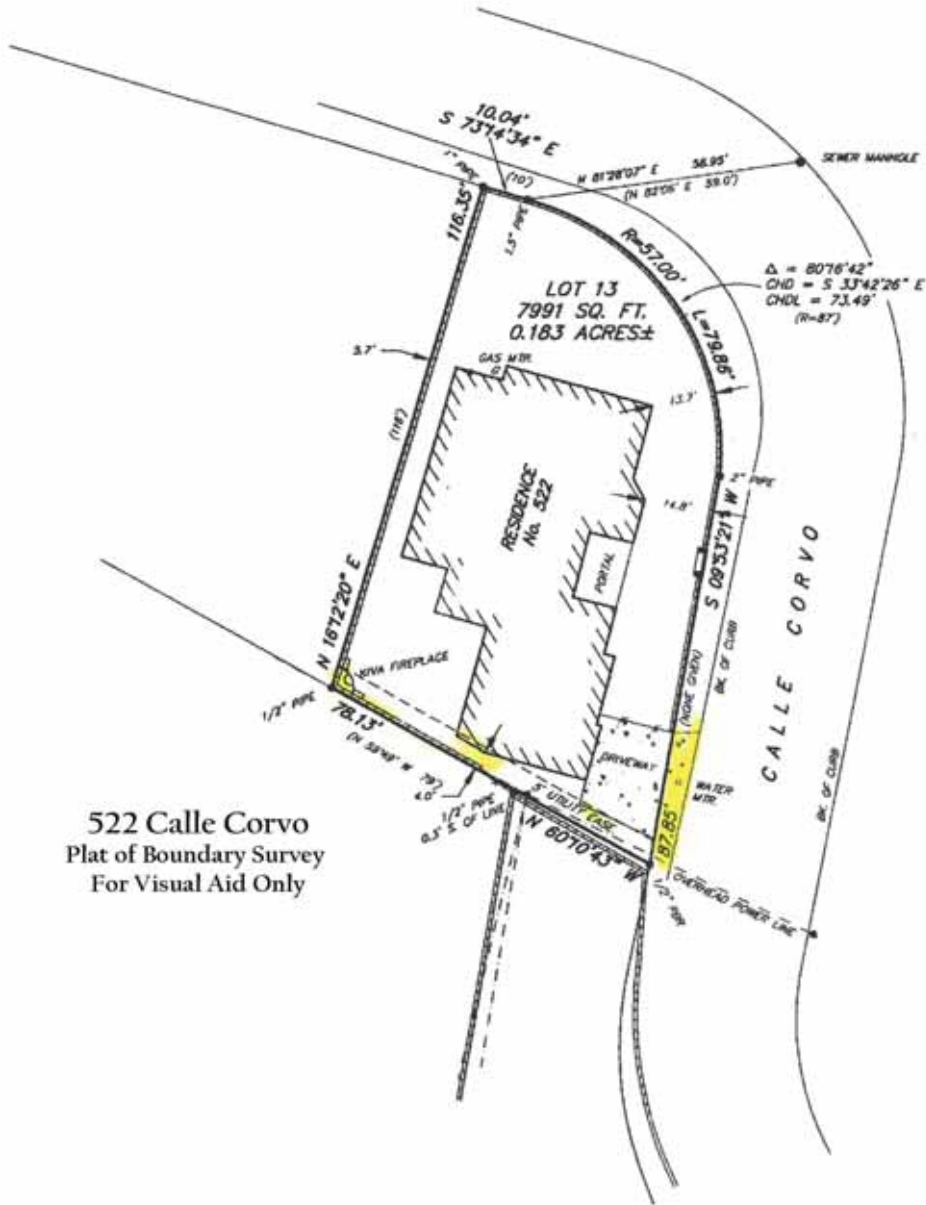
Inside access to the one-car garage is through a master closet passageway. The driveway provides three spaces and there is street parking on this Eastside street.



Floor Plan

522 Calle Corvo
Floor Plan
For Visual Aid Only





522 Calle Corvo
Plat of Boundary Survey
For Visual Aid Only

Property Detail

property summary	
bedrooms	2
bathrooms	1 full 1 three-quarter 1 half
square footage	2,860 ft ²
garage	1-car, attached
acreage	0.183 acre
style	pueblo, contemporary
roof	membrane
construction	adobe, frame
foundation	slab
heating system	natural gas
heating distribution	radiant
flooring	tile
water	city
electric	public
sewage	city
taxes	\$6,899.68 in 2018
subdivision	eastside, historic
mls number	201702295

No representations or warranties either express or implied are made as to the accuracy of the information herein or with respect to the usability, feasibility or condition of the property. Subject to change, sale or withdrawal without prior notice of any kind.