



919 Old Santa Fe Trail

KNOWING SANTA FE

Old Santa Fe Trail Classic

\$689,000

A great in-town location, expansive Sangre de Cristo views, and a large .89 acre lot set this property apart. With room to expand the existing territorial home this property offers many options for its new owner.

Ray Rush
Tim Van Camp
John Rigatti

seller's representatives

ray 505.984.5117
tim 505.984.5118
john 505.984.5141

231 Washington Ave.
Santa Fe, NM 87501
505.988.8088

info@knowingsantafe.com
http://www.knowingsantafe.com

property summary

bedrooms	2
bathrooms	2
square footage	1675 ft ² main
acreage	0.8858 acres
mls number	904838

Sotheby's
INTERNATIONAL REALTY

House

Wonderful 1950 custom Stamm on a large view lot adjacent to Amelia White Park. This pristine 2 bedroom, 2 bath territorial style home offers a great location with big Sangre de Cristo views and room to expand.



Great Room

This combination dining and living room offers plenty of light and intimate Sangre de Cristo views from its large picture windows. The Kiva fireplace provides a cozy respite on cool evenings.



Kitchen

This charming period kitchen boasts wonderful light, expansive Sangre de Cristo views, and plenty of elbow room. The possibilities are endless.



Bedroom

A large room with plenty of natural light and its own en-suite bath located off a small hallway adjacent to the great room. This is one of two private bedroom suites.



Bathroom

This en-suite bathroom has a combination tub/shower and tiled vanity.



Bedroom

A large room with plenty of natural light and its own en-suite bath located off a small hallway adjacent to the great room. This is one of two private bedroom suites.



Garage

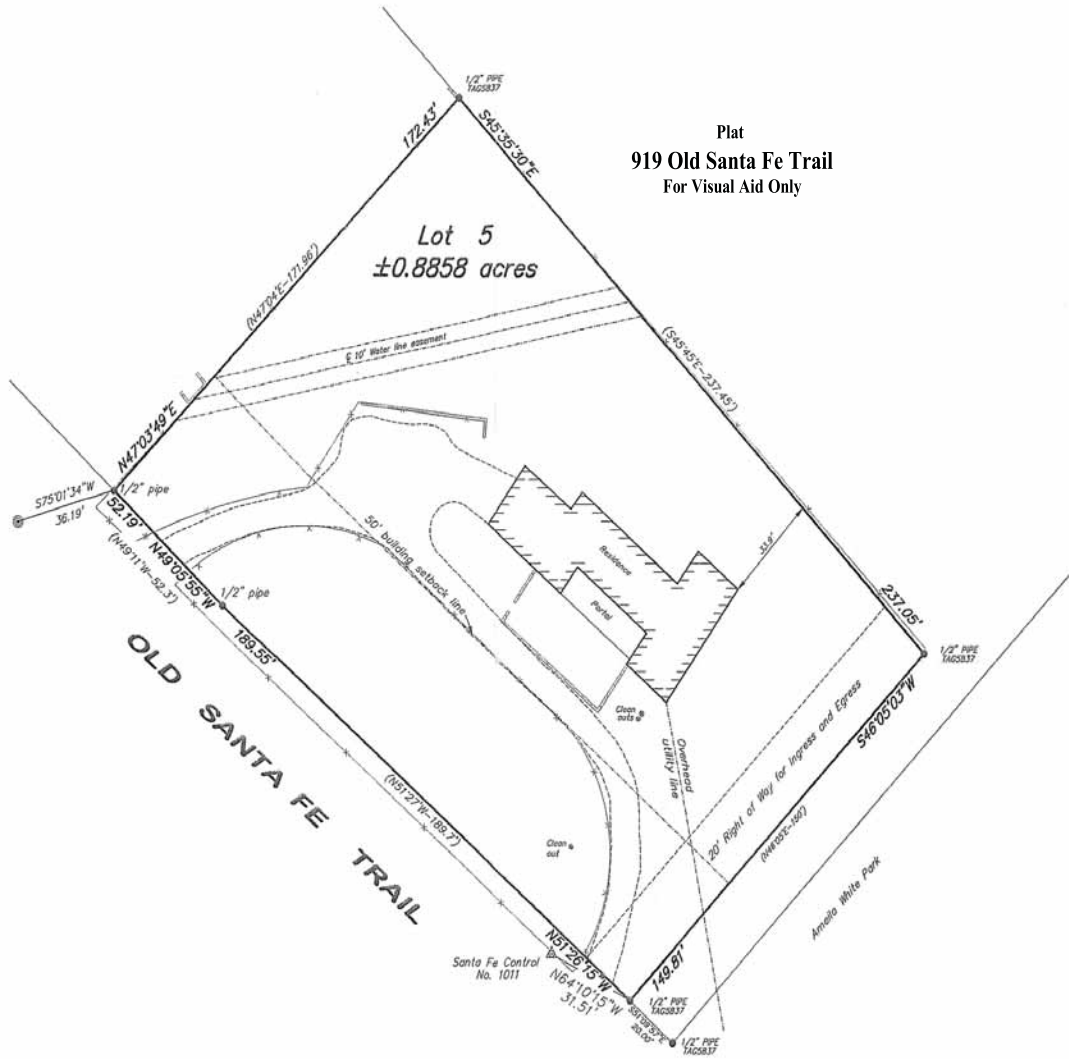
This large one car garage includes two separate storage areas totalling approximately 150 square feet.

Storage Room

Securely located inside the garage is this useful storage space.



Plat
919 Old Santa Fe Trail
For Visual Aid Only



Property Detail

acreage	0.8858 acres
bedrooms	2
bathrooms	2
square footage	1675 ft ²
garage	one-car plus two separate storage areas
foundation	crawl space
-construction	frame, stucco
roof	flat
floor	wood, carpet
year built	1950
style	territorial
heating distribution	forced air
heating system	natural gas
waste	city
water	city
taxes	\$1,690.40 in 2009

No representations or warranties either express or implied are made as to the accuracy of the information herein or with respect to the usability, feasibility or condition of the property. Subject to change, sale or withdrawal without prior notice of any kind.