



## 5 Cerro Gordo

\$1,150,000

KNOWING SANTA FE

### Sheldon Parsons House and Studio

In the early 20th century, New York portrait painter Sheldon Parsons came to New Mexico. He was one of Santa Fe's earliest resident artists and the first director of the New Mexico Museum of Fine Art. His presence drew other painters to the area, leading to the foundation of the city's renowned art colony.

When Parsons purchased this site for his home, three adobe buildings, which Parsons connected, occupied it; for his studio, he added a second story that peers out onto the surrounding hillside. Over the ensuing decades, his home has been updated for modern living—new plaster, electrical wiring, and plumbing and some new floors have been added—but special attention has been paid to the preservation of the structure's original footprint and architectural details.

The residence—now a gracious one-bedroom home with a self-sufficient attached guesthouse—embodies classic Pueblo Revival style, characterized by sturdy adobe walls; slender, roughly hewn vigas; and a lengthy portal. Unique yellow trim around windows and doors and original painted detailing by the artist distinguish it. It is a true treasure, filled with tradition and quintessential Santa Fe character.

Completely private and quiet yet only a short walk from Canyon Road and the Plaza, the timeless site is now a dazzling sanctuary of flowers, shrubs, thriving roses and lilacs, grass, and mature trees. A private well and drip-irrigation system maintain the irresistible lushness, and the brick portal and patio areas allows for easy, gracious outdoor relaxation and entertaining in full view of the vibrant surroundings.

Ray Rush  
Tim Van Camp

seller's representatives

ray 505.984.5117

tim 505.984.5118

231 Washington Ave.  
Santa Fe, NM 87501  
505.988.8088

info@knowingsantafe.com  
http://www.knowingsantafe.com

Sotheby's  
INTERNATIONAL REALTY

## Property

A short walk from the Plaza and Canyon Road, the timeless estate is itself an idyllic sanctuary of dazzling flowers, shrubs, thriving roses and lilacs, grass, and mature trees. A drip-irrigation system maintains the irresistible lushness, and a lengthy brick portal and patio allows for easy, gracious outdoor relaxation and entertaining in full view vibrant surroundings. Though nestled among other classic homes and enjoying proximity to conveniences and attractions, the property is nonetheless very quiet and private.



## House

To create his private home and studio, painter Sheldon Parsons combined three adobe buildings and added a second story that peers out onto the enveloping hillside. Over several decades, his classic home has been updated for modern living—new plaster, electrical wiring, and plumbing have been added—but special attention has been paid to the preservation of the structure’s original footprint and architectural details. The residence—now a gracious one-bedroom home with an attached guesthouse—embodies classic Pueblo Revival style, characterized by sturdy adobe walls; slender, roughly hewn vigas; and a lengthy portal. Unique yellow trim around windows and doors and original painted detailing by the artist distinguish it. It is a true treasure, filled with tradition and quintessential Santa Fe character.



## Entry Porch

A narrow brick path wanders from the driveway toward the home. Through the shade of mature lilacs and trees, it approaches a small concrete porch with charming spindle railing. This informal entrance to the home is a shady perch looking out into the restful greenery.



## Kitchen

The bright, cheerful kitchen features ample counter space surfaced in Pennsylvania blue slate, a five-burner cooktop with hood, two wall ovens, vigas and decking, and charming wood cabinets. Deep-set divided-light windows look out over the gardens and allow gentled sunshine to pour in during the day. Conveniently open to the dining room, the kitchen facilitates informal dining and gracious entertaining with equal ease.



## Portal & Patio Overlooking Gardens

Lush surroundings and a tranquil verdant view await on the picturesque portal and patio. Enveloped by roses; lilacs; phlox; and plum, pear, and locust trees, the enchanting portal and patio can be accessed from several spots in the home. Boasting restored but authentically styled brick and vigas, it is an ideal location for alfresco dining, relaxing in the shade, and enjoying a quiet quintessential Santa Fe experience.



## Dining Room

This space boasts a calming, welcoming allure thanks to hardwood floors, glowing plaster walls, rough-hewn vigas and decking, a kiva fireplace, and a display nicho. Painted detail by Parsons accents the woodwork lining the deep-set casement windows. The kitchen, the formal entrance to the home, and a bath are steps away, encouraging easy entertaining. A built-in cabinet and shelf area is nearby, increasing storage options.



## Living Room

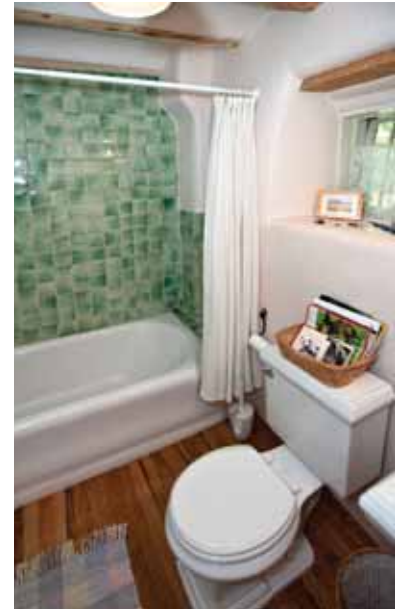
The cool, classic living room is a comfortable space with an authentic northern New Mexico ambiance. Highlights include a traditional wood-burning kiva fireplace in one corner, warm hardwood flooring, large vigas, and banco seating; modern additions include built-in speakers. Steps from the dining room, the living room encourages grand or casual celebrations or easy relaxed living. A door opens to the portal, allowing for an easy indoor-outdoor flow.



## Powder Bath

This bath is convenient and features a tub shower, hardwood flooring, lovely green tilework, and a coved ceiling with vigas.

The built-in medicine cabinet is accented by carved detailing. A small window looks out into the surrounding greenery. A linen cabinet with Parsons-painted detail is nearby.



## Master Bedroom

Up a small step from the living room is this calm, comfortable space, which features hardwood floors, a warming corner kiva fireplace, and a window seat offering a tranquil patio and garden view.

A private full bath is adjacent.

Sounds of the burbling garden fountain contribute to the serenity.



## Bathroom

This alluring bath features both touches of rusticity and cool contemporary elements: a slate-surfaced vanity island with charming wood cabinets, vigas, a claw-foot soaking tub, and a stylish modern shower with a glass door. Behind double wood doors, a washer and dryer are discreetly hidden. A yellow-trimmed and screened door admits cooling breezes and offers patio access.



## Stairway

Vintage wooden stairs near the formal entry rise to Parsons' second-story studio space.



Off the studio, this cozy, sunny space with built-in shelving makes an ideal office. Windows on three sides offer blue-sky views that extend through trees and across Santa Fe's iconic rooftops.

## Office



## Studio

This brilliant aerie features original hardwood flooring, a soaring sloped ceiling with small dark vigas, an oversized corner kiva fireplace, and a 40-pane Truscon window with a view that is quintessentially, breathtakingly Santa Fe. Built-in shelving, cabinets, counters, and other storage space augment the utility and classic charm of the space.



## Gardens and Hot Tub

A hot tub augments the opportunities for enjoyment. From here, paths meander amid the colorful, thriving gardens, which provide a spellbinding backdrop. A water feature reflects the original irrigation ditch that ran through the property.



## Garage



Attached to the main residence but self-sufficient and privately accessed, the charming guest quarters offer restful privacy and vintage charm. They include an enchanting kitchen, a cozy bedroom, a full bath, and a quaint living area with a kiva fireplace and portal access.

## Guest Casita



## Living Room

Guests can relax in privacy here and enjoy a sunny, green view here. Contributing to the appeal of the space are hardwood floors, sturdy square beams, Territorial-style detailing, a corner kiva fireplace, and a “witness wall.” A small vintage door connects the guesthouse to the main residence.



## Kitchen

This picturesque, homey kitchen is an undeniably inviting thanks to numerous sunny windows and vintage detail. It has been outfitted with a full refrigerator, a four-burner electric range, and a farm sink. Decorative cabinetry—including punched-tin doors that may have been painted by Parsons—corbels, and dark-stained vigas contribute to the bona fide charm. A delightful divided-light door opens to a path that connects to the patio, portal, and main residence.



## Bedroom

Through an archway off the kitchen, this endearing bedroom is cool, mellow, and cozy. It features vigas, decking, hardwood floors, and softly curved adobe walls. A window looks out over the garden path and admits lovely light.



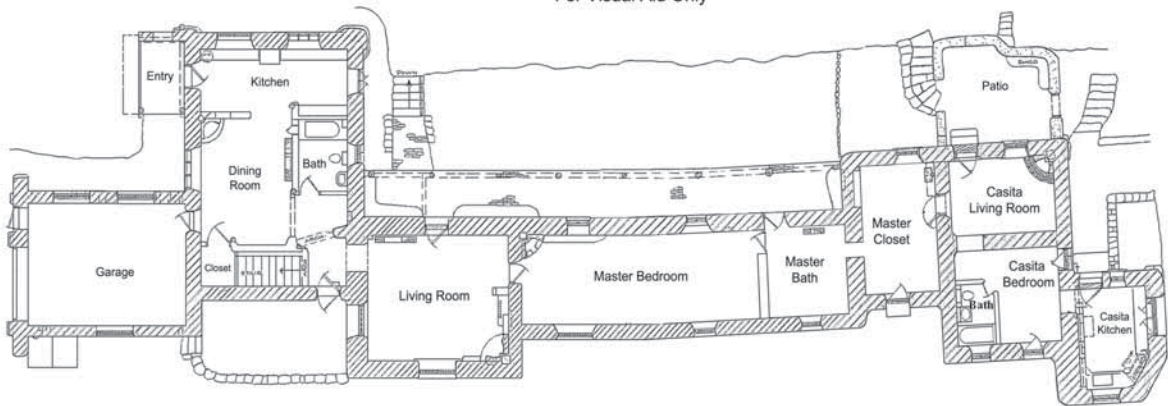
## Bathroom

Blue hues contribute to the cool ambiance of this convenient full bath, which features a sunny deep-set window, a tub shower, a vanity, and a classic covered ceiling with vigas.





5 Cerro Gordo - Unit 5 & Unit 3  
Floor Plan  
For Visual Aid Only





# Property Detail

acres	0.3079 acres
main house	
bedrooms	1
bathrooms	2 full
guest casita	
bedrooms	1
bathrooms	1 full
square footage	3,071 ft <sup>2</sup> main 635 ft <sup>2</sup> guest casita
garage capacity	one-car, attached
flooring	wood
year built	1926
foundation	crawl space, slab
construction	adobe
roof	flat, foam
style	multi-level, pueblo
heating system	natural gas
heating distribution	baseboard, radiant, hot water
waste water	city
water source	city, well (private)
taxes	\$6,541.45 in 2011
condo fees	\$734.72 in 2010
condo insurance (structure)	\$1,057.33 in 2010
subdivision	eastside, historic
mls number	201004702

No representations or warranties either express or implied are made as to the accuracy of the information herein or with respect to the usability, feasibility or condition of the property. Subject to change, sale or withdrawal without prior notice of any kind.