



38 Circle Drive Compound

KNOWING SANTA FE

\$1,600,000

Elegant Hilltop Estate

At the top of a winding drive in the prestigious gated Circle Drive Compound, this unique estate enjoys dramatic panoramas of the Sangre de Cristo Mountains from its very private perch. Introducing the home is a classical ivy-clad porte cochère with an Old World fountain. Indoors, the timeless styled residence is filled with light and boasts elegant spaces with subtle Southwestern touches. The grand living room features a bank of windows and French doors opening to an expansive mountain-view portal and deck; adjoining are a library and a formal dining room. The home also includes a charming kitchen, a two-car garage, a generous laundry area, a luxurious master suite with two baths and a fireplace, a restful guest bedroom, and a well-separated office that could easily serve as a quiet additional bedroom. Tasteful native landscaping and a spacious, inviting guesthouse contribute to the feeling of a true estate. An additional lot is included to afford protected views and seclusion.

Ray Rush
Tim Van Camp

seller's representatives

ray 505.984.5117
tim 505.984.5118

231 Washington Ave.
Santa Fe, NM 87501
505.988.8088

info@knowingsantafe.com
http://www.knowingsantafe.com

Sotheby's
INTERNATIONAL REALTY

property summary

bedrooms	4
bathrooms	3 full 2 three-quarter 1 half
lot size	10.58 acres
square footage	5,005 ft ²
mls number	201803629

Property

At the top of a winding drive in the prestigious gated Circle Drive Compound, this estate enjoys sweeping panoramas of the Sangre de Cristo Mountains from its very private 10.58 acres. Introducing the main residence is a classical ivy-clad porte cochère with an Old World fountain. Tasteful native landscaping and a spacious one-bedroom guesthouse contribute to the feeling of a true estate. An additional lot is included to afford protected views and seclusion.



House

The timelessly styled interiors of the four-bedroom, 4,259-square-foot main residence are filled with light and boasts elegant living and entertaining spaces with subtle Southwestern touches. The grand living room features a bank of Palladian windows and doors opening to an expansive portal and deck with an inspiring Sangre de Cristo view.

A quiet library and a stately formal dining room adjoin. The home also includes a charming kitchen with an island and deck access, a two-car garage, a generous laundry area, a craft or storage room, a luxurious master suite with two baths and a fireplace, a guest suite, and a quiet office with a bedroom that could easily serve as an additional bedroom.



Porte Cochere

A stately rock-walled paver driveway leads up hill to the estate, which is introduced by a classical ivy-clad porte cochère with a European-inspired fountain and striking stonework. From here, large double wood doors create a grand introduction to the home.



Foyer

With its stately double wood doors, arched ceiling, and warmly hued tile floors, the foyer introduces the airy spaciousness and timeless style of the home.



Living Room

This dramatic open space is destined to be the center of social activity, with refined tile floors, a tray ceiling with eye-catching angles, and nearly a full wall of Palladian doors opening to a deck with sweeping views of the Sangre de Cristos.



Portal / Deck

The highlight of the home is a portal and deck designed for appreciating a dazzling mountain view. A sheltered space runs alongside the living room, offering cool shade; while the open-air spaces feature classical railings and are ideal for lounging or enjoying relaxed meals and refreshing drinks alfresco.



Dining Room

Designed for meals that are elegant and formal or quiet and casual, the home's dining room is ideally located between the kitchen and grand living room and features a warming corner fireplace. For effortless indoor-outdoor enjoyment, it opens through a bank of glass doors to the expansive deck and mountain views.



Kitchen

Filled with light and charm, the home's comfortable kitchen is outfitted with crisp white cabinetry, granite countertops, a butcher-block island, a wall oven, a dual-fuel cooktop, and a door to the deck for easy indoor-outdoor cooking and dining.



Library

A handsome fireplace anchors the library, which is a quiet space for contemplative moments with two walls of traditionally styled built-in shelving and cabinets. The room conveniently adjoins the main living area, expanding the options for entertaining.

A wide window offers a Sangre de Cristo view that encourages daydreaming.



Powder Bath

Centrally located but discreet, the spacious powder room is a colorful space perfect for use during grand celebrations and gatherings.

It features a traditional vanity and a useful linen closet.

Master Bedroom

A small set of stairs creates ideal separation for the lavish, light-filled master suite, which enjoys a magnificent view and includes carpeted flooring and a warming fireplace with built-in shelving and cabinets on either side. A sunny bay window offers an alpine outlook, while a single French door opens to the deck. The bedroom is accompanied by two refined baths and walk-in closets.



Her Bath

The master suite's more opulent bath has a regal quality thanks to carefully chosen finishes and fixtures. Surfaces of peach-hued stone and warm wood, plentiful windows, a private water closet, and a soaking tub beside a decorative mural are highlights. Hidden behind a second door is an additional dressing area or office with a built-in vanity or desk, a safe, a west-facing window, and an auxiliary walk-in closet.



His Bathroom

This stylish bath includes a vanity with a large mirror, a tub shower, a dressing area with a bureau, and a mountain view through double windows.



Guest Bedroom

Tucked on the front of the home, this guest bedroom has a relaxing traditional style, with carpeted flooring, a beamed ceiling, its own spacious walk-in closet, windows looking out into the surrounding foliage, and an en suite bath.

Tasteful tilework contributes to the inviting nature of this spacious bath, which is included as part of the main guest suite and offers a roomy vanity and a tub shower.

Guest Bathroom

Bedroom / Office

Hidden at the quiet end of one wing of the home is a handsome office with a bank of built-in bookshelves and drawers as well as a walk-in closet designed for media components and electronics.

The space includes comfortable carpeted flooring, an en suite bath, and access to the mountain-view deck, making it ideal for use as an additional guest bedroom, if desired.



Bathroom

This spacious, colorful bath features a roomy stone-topped vanity along with a unique shower fitted above a Japanese-style tub.



Laundry Room

Tucked at the end of a hall, the generous sunlit laundry room is a cheerful space for household tasks, including plentiful cabinets, a sink, and under counter appliances.



Garage

The home's oversized lighted two-car garage includes storage shelving on three sides.



Guest House

Secluded behind the main residence and well separated for consummate privacy, the one-bedroom guest-house is both spacious and inviting, offering a charming kitchen, laundry facilities, a living area with a fireplace, a mountain-view portal, and a quiet bedroom and bath.



Kitchen

Just inside the entrance to the guesthouse are a thoughtful but discreet laundry closet and a charming, well-equipped kitchen space with granite countertops, a two-burner electric cooktop, a built-in microwave, a small refrigerator, and a sink.



Living Room

In the stylish living room, a corner fireplace adds warmth and charm, the airy beamed ceiling adds a sense of elegance, and sets of windows admit cheerful light. French doors open to a small portal with a dramatic view.



Portal

Nestled amid the trees in a very private location, this serene portal offers guests their own spot for reveling in the majesty of the Sangre de Cristos while surrounded by the distinctively rugged landscape of northern New Mexico.

Bedroom

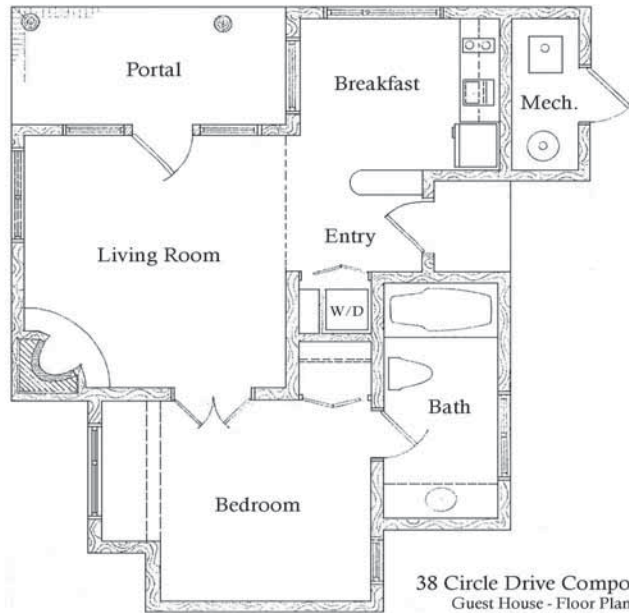
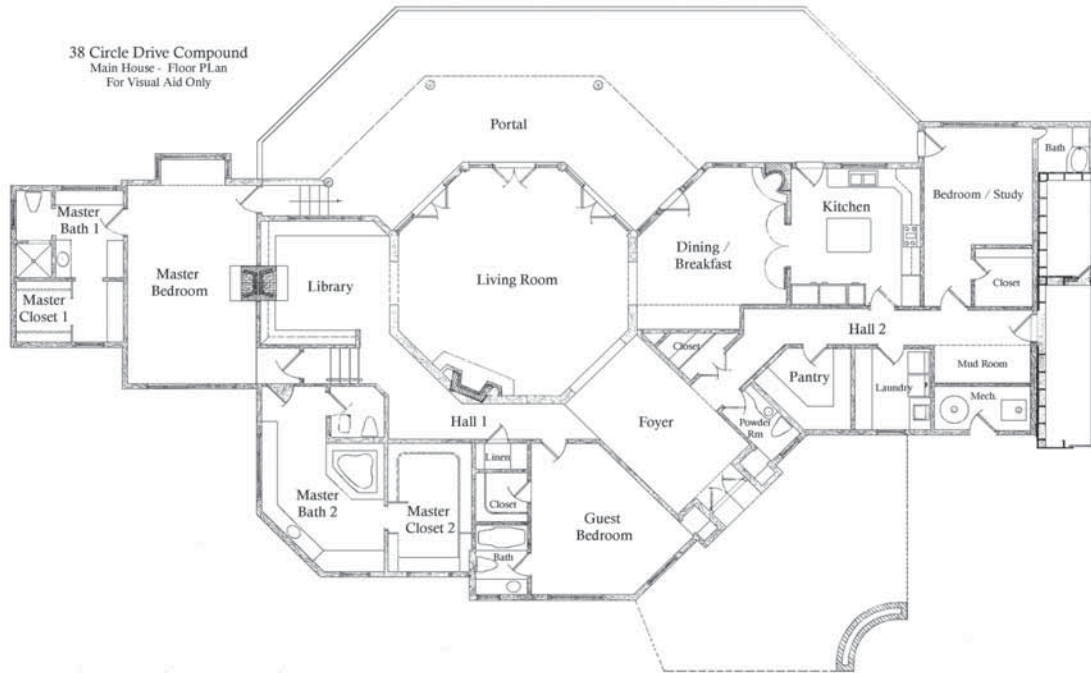
Secluded behind double doors, the guesthouse bedroom is cozy, mellow, and private. Among its highlights are handsome stone tile floors, a window nook offering a view into the trees, a double closet, and an en suite bath.

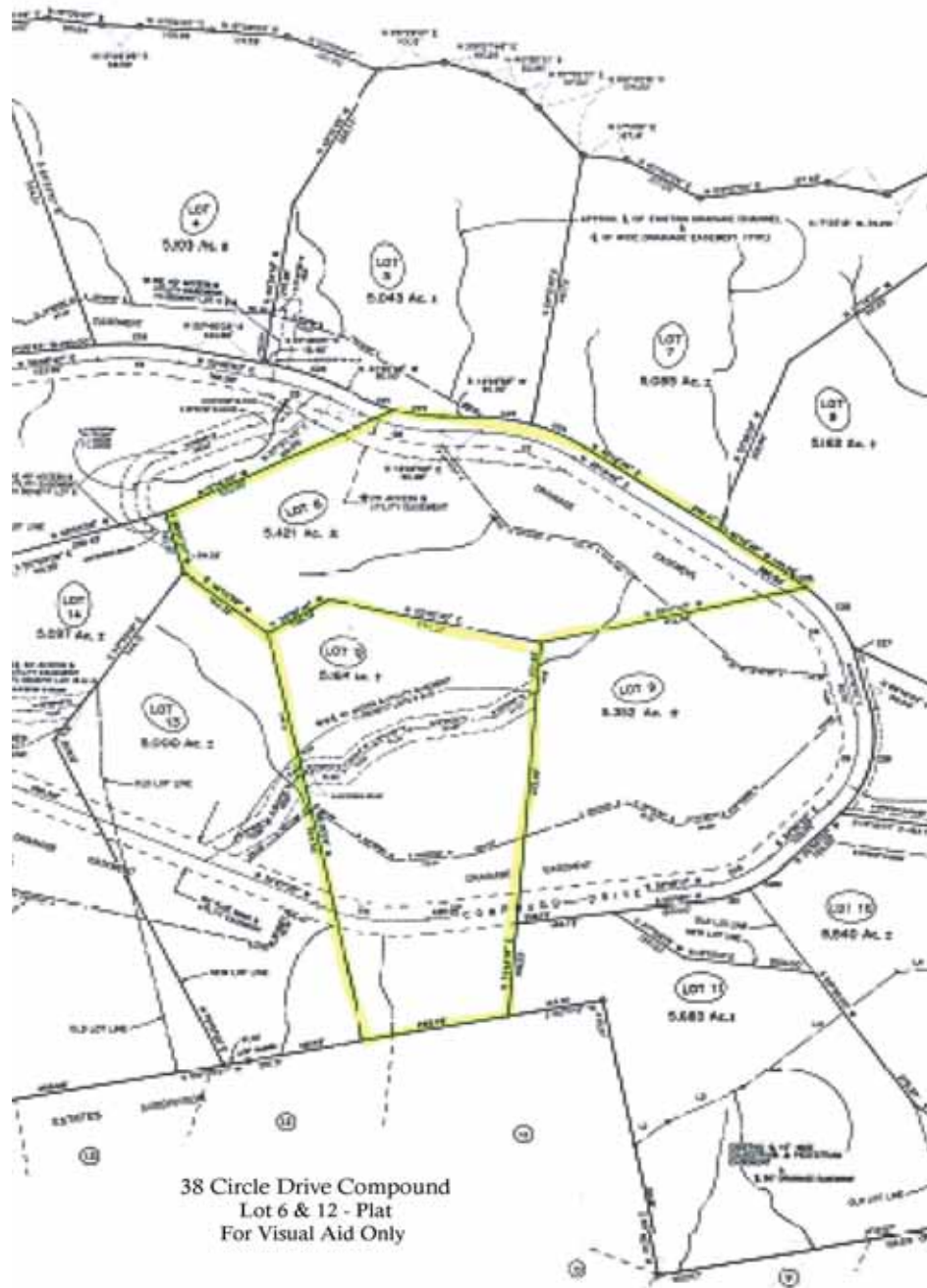


Bathroom

Earthy tilework and serene cream-colored walls contribute to the stylish nature of this very spacious bath, which offers a single-sink vanity and a tub shower.

Floor Plan





Property Detail

property summary	
bedrooms	4
bathrooms	3 full 2 three-quarter 1 half
garage	2-car attached
square footage	4,259 ft ² main 746 ft ² guest
acreage	10.58 acre
year built	1995
style	territorial
roof	foam
construction	frame, stucco
foundation	slab
heating system	natural gas
heating distribution	hot water, radiant
flooring	carpet, tile
water	well, shared
electric	public
sewage	septic
taxes	\$13,785.66 in 2017
hoa fees	\$3,800 / yr (\$1,900 yr per lot)
subdivision	circle drive compound
mls number	201803629

No representations or warranties either express or implied are made as to the accuracy of the information herein or with respect to the usability, feasibility or condition of the property. Subject to change, sale or withdrawal without prior notice of any kind.