



1562 Upper Canyon Rd

Knowing Santa Fe

\$3,200,000

Rural Reverie:

A Bucolic Retreat in the Heart of Santa Fe

Secreted off legendary Upper Canyon Road in the shadows of the Sangre de Cristo foothills, this idyllically pastoral property is a hidden treasure only minutes from galleries, shops, restaurants, and museums. Green swaths of grass; towering mature cottonwoods; an orchard; a vegetable, herb, and flower garden; and a hot tub and pool; plus an adjacent, undeveloped lot surround a refined 3,831-square-foot main residence and a stylish 1,058-square-foot studio guesthouse. Portales, patios, and courtyards—of which the property has seven—allow for the appreciation of the verdant landscape, the surrounding hills and mountains, and the famous New Mexican skies, impossibly blue by day and star-filled by night.



Ray Rush
Tim Van Camp

seller's representatives

ray 505.984.5117
tim 505.984.5118

231 Washington Ave.
Santa Fe, NM 87501
505.988.8088

info@knowingsantafe.com
http://www.knowingsantafe.com

property summary

bedrooms	4
bathrooms	2 full 1 three-quarter
square footage	4,889 ft ²
year built	1866 Main 2000 Guest
Acreage	3 acres
mls number	201101133

Sotheby's
INTERNATIONAL REALTY

Lot & Exterior

The property at this one of a kind estate consists of two separately deeded lots. Lot 1B contains 1.698 acres and is the site for the house, guest house, pool and gardening shed. Lot 2B contains 1.306 acres, has a mature fruit orchard, the property's barn and small arena and is kept lush from the property's ample irrigation rights.



Main House

The main residence epitomizes unaffected sophistication. Portions of the structure date back to the 1860s; additions and improvements in the 1930s and 2000—many by esteemed builder John Wolf—culminated in the creation of a truly lovely, welcoming home.



Entry Courtyard

Beyond the regal gravel drive and lawn, a whimsical carved white gate opens to reveal the home's magical front courtyard. A flagstone path meanders among lush landscaping, beside a lovely fountain, to the charming portal off the master bedroom, and to the home's windowed front door.



Family Room / Dining Room

The captivating family room/dining room beckons with its skylit banco, fireplace, and expanse of floor-to-ceiling windows and glass doors opening to the enchanting 4brick patio. Perfect for formal and informal dining as well as entertaining, the space is utterly inviting and enjoys a view of the patio and the orchard beyond.



Rear Patio

Lush surroundings and an orchard view await on the picturesque rear patio. Paved in handsome brick and gravel, the patio also faces two banks of gleaming paned glass, which open to the family room and greenhouse hallway. Landscaped beds and access to a grilling area encourage hours spent relaxing, living, and dining outdoors. Mature trees create a shady curtain of green.



Kitchen

The country-style kitchen, conveniently open to the family room, facilitates family dining and gracious entertaining with equal ease. Features include butcher-block and marble countertops, double ovens, a Sub-Zero refrigerator, a built-in rangetop with hood, and abundant drawers and cabinets.



Living Room

The living room, a handsome space, features a fireplace, vigas, wide-plank hardwood floors, and access to a vintage portal and serene courtyard. This space flows gracefully into the family room and kitchen, facilitating grand entertaining.



Original Front Courtyard and Portal

Once the original entrance to the home, the former front portal features a screened door, wood flooring, and wood posts with carved decorative highlights. The portal wraps around to the guest bedroom wing, which can be accessed via a separate door. Flagstone pathways, lilacs, a tall mature cottonwood, and other landscaping highlight the courtyard. Hills rise gracefully in the distance.



Library / Office

Through an alcove off the living room, the library is a secluded space ideal for business pursuits, private study, or quiet contemplation. Stylistic highlights include wide-plank wood floors, a kiva fireplace with a display mantel, walls of built-in bookshelves, a lighted art shelf for pottery or sculpture, and bold vigas. Low deep-set windows provide a view of the greenery in the front and side courtyards.



Hallway to Bedrooms

Additional private quarters—including a shared bath—are located off a hallway with hardwood floors, vigas, plaster walls, and a door to the wraparound portal. The two bedrooms, one of which currently serves as an office, share a bath.



Bedroom I

This generous bedroom is imbued with a subtle light thanks to three windows overlooking the rear patio and orchard. Hardwood floors, a wall perfect for displaying art, and an overwhelming sense of privacy contribute to the serene feel here. Just adjacent, three double closets in a separate windowed dressing area provide plentiful storage space.



Bathroom

This gracefully accommodating bath is a lovely space with a tall ceiling, hardwood floors, a tub shower, and warm walls. The antique free standing sink is beautiful.



Bedroom II / Office

This space—with its walls of built-in shelves and plentiful cabinets and drawers—could serve equally well as a bedroom or office. A window on one end reveals a view of the orchard, while a window seat at the other end overlooks the former front courtyard and portal. Decorative iron fashioned in a leaf pattern provides a fanciful accent.



Closet

The closet for this bedroom has two doors and is surrounded by the built in bookshelves.



Gallery / Hallway to Master

Lined with paned windows, the hallway to the master bedroom wing recalls a greenhouse or arboretum. Brilliantly sunny during the day, the space has vigas, a brick floor, and a view of the expansive rear patio.



Master Bedroom

The dimensions of the master suite, separated from the living spaces by a windowed greenhouse-like corridor, are generous yet not overwhelming. Highlights include access to the front courtyard and portal, a private bath, and a roomy walk-in closet. Around the corner from the window-lined hallway, the mood changes to one of calm sophistication and relaxation. Plaster walls, hardwood flooring, and art lighting create a mellow tone as the space opens to the refined master suite. A testament to understated elegance and comfort, the master suite is airy but not palatial—a restful space with room to breathe.

Sunlight and reflections of greenery ease in through deep-set windows on three sides, and a Dutch door provides access to a charming portal and the front courtyard. A corner kiva fireplace creates a cozy ambiance on wintry nights or snowy days. Hardwood floors, vigas, a nicho, and an ample walk-in closet are other highlights.



Master Bathroom

Tile floors, a tiled vanity with two sinks, a linen closet, medicine cabinets, a soaking tub with convenient niche, and a separate step-in shower are highlights of the warm, roomy master bath. A large skylight extends the width of the room and above the shower, filling the space with a subtle natural light. A clever window beside the vanity mirror allows light in from the sunny hallway.



Garage

The two-car garage of the main house comprises two separate bays with windows, skylights, and storage space.



Guest House

Built by John Wolf, the guesthouse includes a main living, entertaining, or studio area with soaring ceilings, plaster walls, and a kiva. Additional private space for guests is afforded by a skylit bedroom and a three-quarter bath. The studio space enjoys access to three portales, one of which has a kiva and looks out on the hot tub, pool, and idyllic landscape.



Guest House - Living Room

Honey-hued hardwood floors, warm-tone plaster walls, soaring ceilings with vigas, a kiva fireplace, and abundant windows create an exhilarating ambiance in the main room of the guest-house. A bay window includes a banco for enjoying a view of the property. A bar with a sink, built-in cabinetry, and a small refrigerator makes poolside entertaining easy.



Guest House - Bedroom

Filled with a cool, gentle light, this comfortable bedroom is a delightful repose for guests. Two double closets with folding doors and built-in shelves, a skylight, a view of a portal, hardwood floors, and a private bath are among the highlights.



Guest House - Bathroom

This charming bath features such decorative elements as a tiled vanity with a scalloped sink, hardwood floors, a small skylight, and a tiled double shower with an etched-glass door with an etched-glass door.



Guest House - Garage

Comprised of two separate bays, the guesthouse garage offers storage space for two additional vehicles—including a horse carriage, which can be accommodated by the garage's one high bay. Each garage is lighted, skylit, and windowed and includes a large storage room. The standard bay includes cabinets, drawers, a workbench, and a utility sink.



Pool

A flagstone walk leads to steps that rise toward the long, elegant swimming pool. Surrounded by wire fencing and the verdant grounds, the flagstone-paved pool area is accessed via a decorative wrought-iron gate and presents an impressive juxtaposition of lush greenery, earth tones, and cooling water.



Hot Tub / Patio

Accessed from the main courtyard, the rear patio, or the guesthouse, the hot tub is surrounded by wood decking and bountiful landscaping. Perfect for nighttime stargazing, the patio is lighted and secluded; during the day, it is enveloped by greenery and has a magnificent view.



Barn

Equestrian facilities, including a small barn, turnouts and small fenced arena, are located on lot 2B.



Garden / Potting Shed

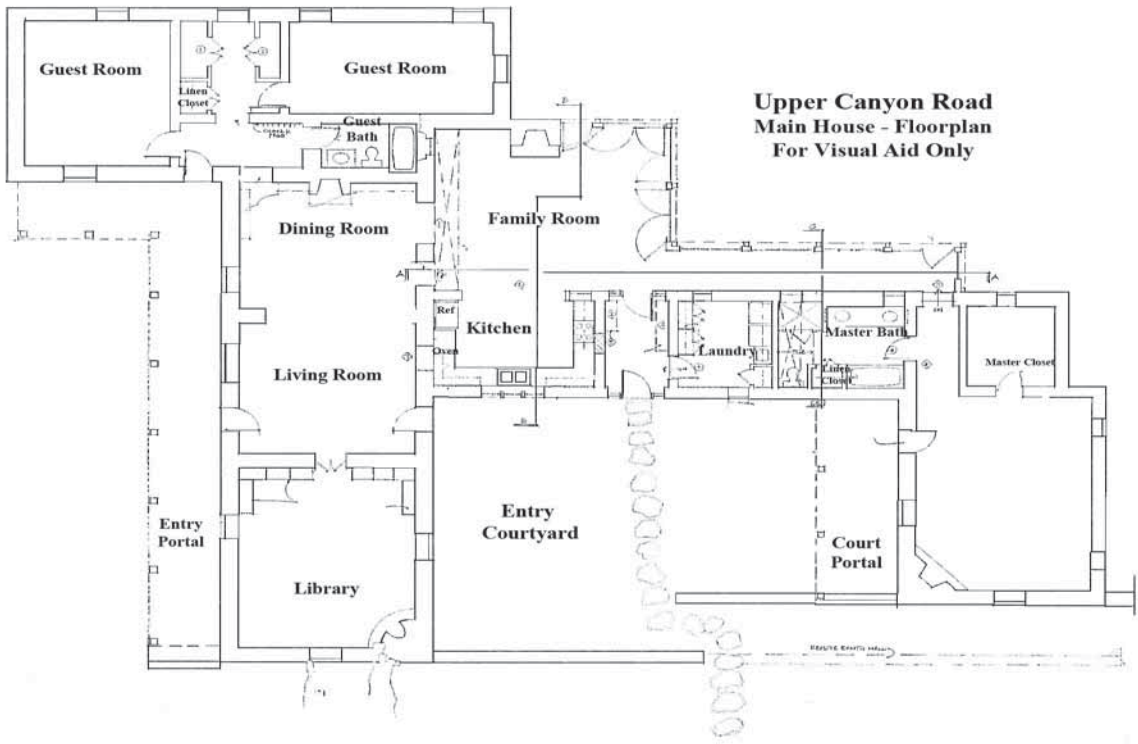
A gate in the coyote fencing opens to the property's more-formal flower, herb, and vegetable gardens. Here, six raised beds are watered by a drip irrigation system. A potting shed is a convenient amenity, and a view of the mountains and trees completes the peaceful mood.



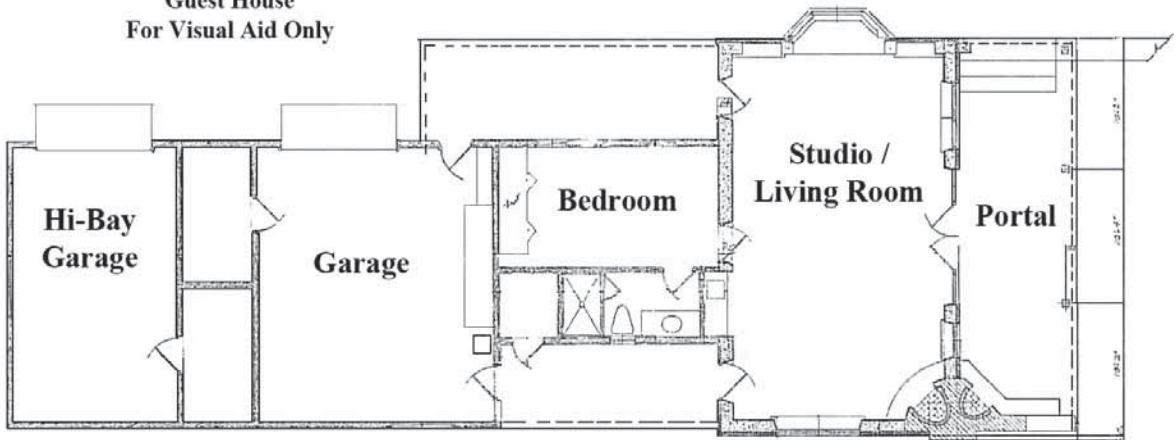
Additional Lot (2B)

Lot 2B is 1.306 acres and has a mature orchard and a small horse facility.

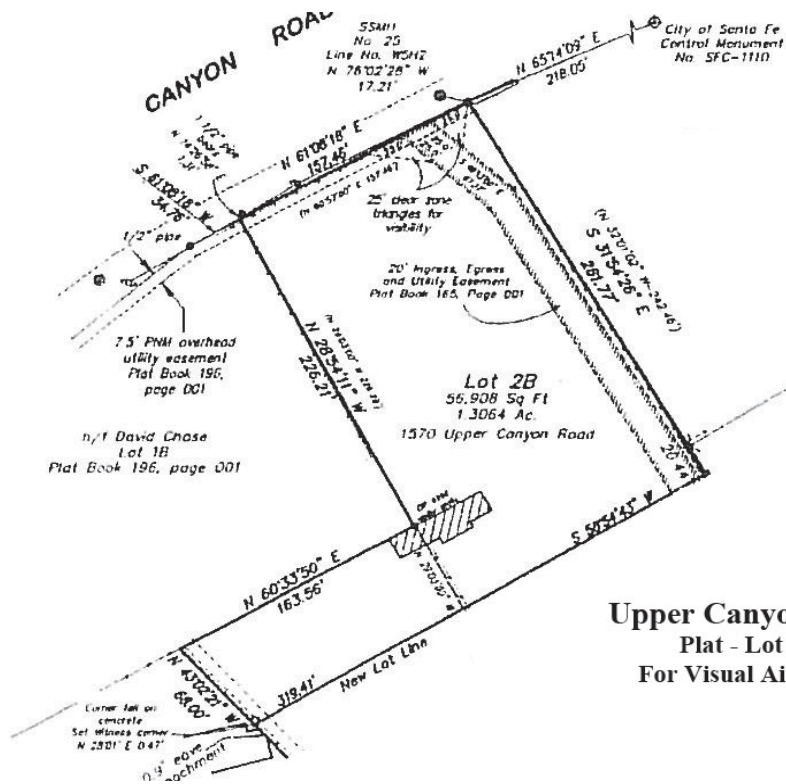
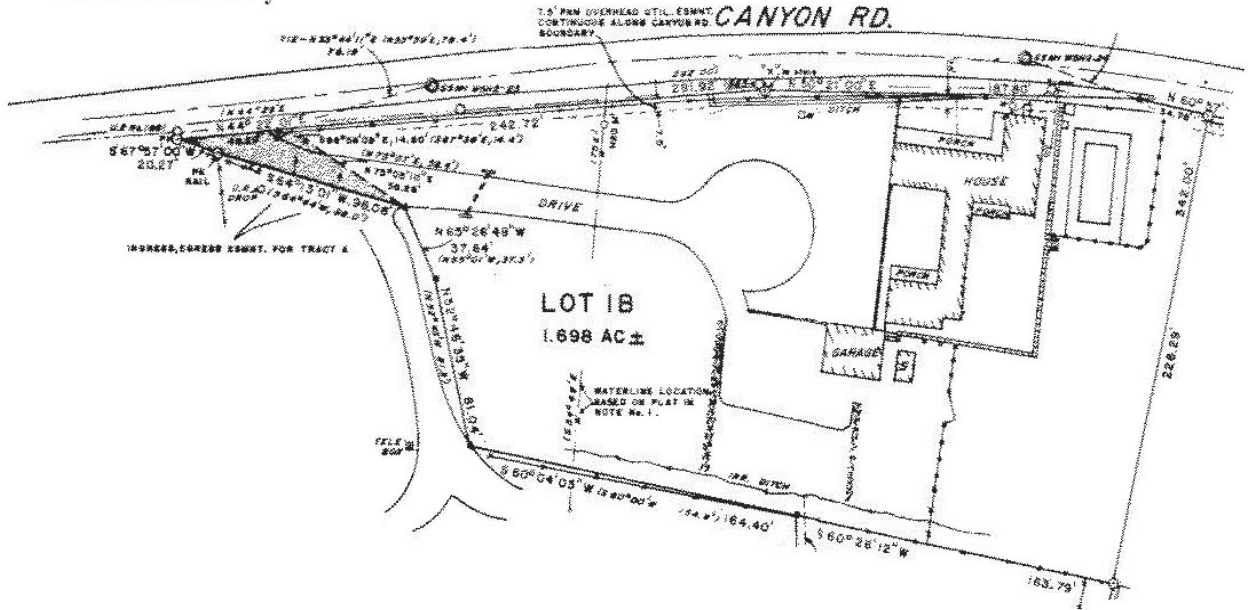




**Upper Canyon Rd
Guest House
For Visual Aid Only**



Upper Canyon Road
Plat - Lot 1B
For Visual Aid Only



Upper Canyon Road
Plat - Lot 2B
For Visual Aid Only

Property Detail

bedrooms	3 main house 1 guest house
bathrooms	2 full main house 1 three-quarter guest house
square footage	3,831 ft ² main house 1,058 ft ² guest house
garage - main	two car garage with two separate bays with windows, skylights and storage space
garage -guest house	Comprised of two separate bays, the guesthouse garage offers storage space for two additional vehicles—including a horse carriage, which can be accommodated by the garage's one high bay.
construction	adobe, frame, stucco
foundation	basement, crawl space, slab
roof	built up, flat, foam
style	territorial
heating distribution	baseboard
heating system	natural gas
acreage	3 acres
taxes	\$6,773.48 Lot 1B in 2011 \$1,466.09 Lot 2B in 2011
waste water	city
water supply	city
year built	1866 Main House 2000 Guest House
zoning	Residential

No representations or warranties either express or implied are made as to the accuracy of the information herein or with respect to the usability, feasibility or condition of the property. Subject to change, sale or withdrawal without prior notice of any kind.