



Matteucci Compound



Ray Rush
Tim Van Camp

seller's representatives

ray 505.984.5117
tim 505.984.5118

231 Washington Ave.
Santa Fe, NM 87501
505.988.8088

info@knowingsantafe.com
<http://www.knowingsantafe.com>

Matteucci Compound

Knowing Santa Fe

\$12,000,000

Rich in Santa Fe History

Behind an elaborately crafted historic stone and adobe wall, this famed complex of galleries, gardens, and residences was both inspired by ancient Pueblo architecture and adapted for modern sensibilities. This collection of some 18 gallery, office, and storage spaces; an indulgent guest residence; a magnificent main residence; a idyllic sculpture garden; and three free-standing guesthouses has been created over many decades by combining and expanding once-distinct structures and by using materials from demolished barns and cabins from across northern New Mexico. Established as a gallery space by Nicolas Woloshuk, expanded and augmented by Forrest Fenn, and purchased and maintained since 1988 by renowned art maven Nedra Matteucci, this is surely one of the most outstanding and highly sought-after properties in Santa Fe.

property summary

bedrooms	8
bathrooms	8 full 4 half
square footage	20,066 sq.ft.
subdivision	Eastside/Historic
acreage	1.7548 acres
mls number	803321

Sotheby's
INTERNATIONAL REALTY

Property - Gallery

Behind a historic stone and adobe wall, the Nedra Matteucci Galleries consist of a rambling compendium of rooms both inspired by ancient Pueblo architecture and designed for modern sensibilities. The famed complex provides a variety of dimensions, moods, color schemes, storage and display options; also featured are multiple astutely outfitted professional offices. Each space has been appointed with museum-quality art lighting.



Front Gallery

The slightly sloped roof of the main gallery may be evidence of the fact that many of this property's angles are deliberately irregular or out of square. Providing the primary access to all the galleries from the street and parking area, the main gallery welcomes with a cool, quiet ambience and invitingly light-toned and colorful walls. The space features vintage wood doors, a tall ceiling with vigas and ceiling fans, and carpeting. Ample wall space and shelves encourage the display of all manner of artistic works.



Vault

Off the main gallery and behind a vault door, this narrow carpeted gallery represents a creative use of space. It maintains a Southwestern flair with vigas, decking, adobe architectural elements, and a banco. A built-in corner light table is an added amenity.



Indian Gallery

Tucked between the main gallery and the Hassam gallery, this warm space includes walls of lighted, glassed-in shelving and central display cases ideal for the exhibition of sculpture, artifacts, and jewelry. Tile flooring and dark-toned vigas and decking create an earthy atmosphere.



Hassam Gallery

Named for American Impressionist Childe Hassam, whose work has been displayed here, this gallery features a soaring ceiling and immense wall space. A corner kiva fireplace with decorative tile accents provides warmth and character, while a tall hidden window lets in mellow, filtered natural light.



Garden Gallery

A bright, lively space, this gallery includes multiple windows, a banco, distressed wood-plank walls, dark ceramic-tile floors, vigas, and beams. An architectural adobe wall partially conceals a clever kitchen nook with a granite countertop, refrigerator, and icemaker. Double antique wood doors open to a small patio, which, in turn, leads up to the sculpture garden.



Back Gallery

A strong sense of the Southwest is created here, thanks to dark ceramic tile floors, rustic ceiling beams and decking, and earthy plaster banco, and a kiva fireplace with Native-themed decorative detailing. An adjacent stack room accessed via double antique wood doors and a double utility closet provide added convenience.



Book Room

Antique wood steps lead to the book room, with its low, sloped wood ceiling, built-in shelving, herringbone brick floors, vintage Dutch doors, and nichos in a variety of shapes.



Blue Gallery

A cool sophistication pervades this gallery. The kiva fireplace is accented by a slate hearth and decorative tile, Former windows have been converted into display niches for sculpture. Vigas and a coved ceiling continue the Santa Fe style. A door at each end of the gallery leads to the attached guest residence and the magnificent main residence.



Hall Gallery

Even this space, which would perhaps normally function simply as a hall leading to offices and other galleries, can be utilized for the display of art. The narrow walkway features plentiful wall space of glowing plaster walls, arched doorways and ceilings, and substantial lighting.



Nedra's Office

A decorative antique wood door accesses this roomy, accommodating professional workspace. Stylistic highlights include light-toned hardwood floors, nichos, a corner kiva fireplace with a banco, wood shelving, and white decking and dark ceiling beams that provide striking contrast. An additional central stack room is adjacent.



Nell's Office

This central office area counts carpeting, vigas, coved ceilings, art lighting, and cool plaster walls among its features. Doors on either side access the file room and a stack room. A glass door gives way to the lush atrium and allows natural light to filter in.



Advertising

Accessed by yet another decorative antique wood door in an arched doorway, this efficient space claims such stylistic highlights as hardwood floors and classic built-in shelving and cabinets. Nearby, a filing closet offers expedient built-in drawers and shelves.



Elizabeth's Office

Nestled behind a small but regal wrought-iron gate, this office space boasts a unique ceiling lined with Native textiles, walls of built-in bookshelves, a storage closet, and a soothing, mellow light. It is a private space perfect for concentration and professional pursuits.



Main Residence

This remarkable two-story private residence, largely the work of Forrest Fenn, includes sophisticated main-level living and entertaining spaces. In addition, at the top of a fortress-like spiral staircase lie auxiliary living areas and generous private quarters. A balcony, a roof deck, and a fully skylit steamshower are among the outstanding attractions here.



Entry

Light hardwood flooring and sidelights along a massive wooden door create a bright and airy ambience to introduce the sophisticated, modern main residence. Built-in shelving for books and sculpture is a distinctive feature here.



Dining Room

Through a curved doorway off the entry lies the dining room, where its hardwood floors, tall ceiling with vigas, and deep windows with antique Spanish shutters create a serene space for formal or informal dining.



Den

Separated from the dining area by a dramatic adobe-brick arch, the chic mellow living area is centered below a large skylight and focuses on a small kiva fireplace. The hardwood flooring and vigas in the dining room continue the Southwestern character here. A large window stands opposite a spacious, well-lit art wall.



Spiral Stairway

Modeled after the torreones constructed by ancient Native civilizations, this magnificent stairway nevertheless possesses a distinctly modern flair. A small window, traditional for structures of this nature, is shuttered by an intricately carved wooden door. The thick wooden steps wind and rise to the elegant second level and the additional living and private quarters found there.



Master Bedroom

Cool, expansive, and bright, the master bedroom lies behind a striking Gothic-style door. Large walls encourage the display of art, and a corner kiva fireplace with a banco and nichos conjures a warm, welcoming ambience. A double door with sidelights leads to a small balcony with a carved wood railing and a view toward the mountains in the west. At the north end of the room, a wide wood door with a wrought-iron screen opens to reveal a rooftop deck ideal for lounging and dining.



Balcony



Roof Deck



Office

Steps lead up through a wide archway to the office, which features built-in rustic wood cabinets and shelves as well as rough-hewn viga as decking and a corner kiva fireplace. A wet bar with a mosaic-tile and wood countertop facilitates entertaining. An oversized picture window provides an entrancing northerly view.



Hallway to Bedrooms

At the top of the circular stair, a wide landing flows to the living and office area as well as the private quarters. A tall window looks out through ivy across the front courtyard towards the north. Beyond, two double closets—one housing laundry facilities—lie behind rustic wood doors.



Sunroom

A lengthy narrow skylight follows the unique dramatic curve of this sunroom's central wall; sturdy wood ceiling beams create an entrancing treelike shape. A wall of windows faces south, providing abundant light and warmth. Along another wall lie an extensive media closet and a sink or wet bar area topped with rose-tinted stone.



Studio

Ideal for use as a sitting room, library, or additional entertaining space, this area includes a walk-in closet, vigas, a ceiling fan, and two south-facing windows. It augments and flows naturally into the grand adjacent bedroom.



Bedroom

This spacious carpeted bedroom enjoys plentiful daytime light and views in two directions thanks to abundant windows. The coved ceiling with small vigas has a ceiling fan. A small walk-in closet with shelving offers storage space.



Bathroom

Highlighted by delicate floral-motif tile and sinks, this bath is located at the end of the stair-top landing. Other noteworthy features include two large vanities, a skylight, vigas, and a separate water closet and tub secreted behind a pocket door.



Guest Residence - Stone Passage

These sophisticated, roomy guest quarters have historically been among the most highly sought-after in Santa Fe. This unique corridor leads from the guest residence to the blue room of the main gallery area. Weighty stone blocks compose a regal arched vestibule that soars above classical brick steps, recalling a passageway in a European castle or wine cavern.



Entry Hall / Hall to Kitchen

A stately tall ceiling, skylights, a lovely leaded-glass and wood door, and wide-plank hardwood floors create a sophisticated and classic style in this hallway, which leads from the brick courtyard to the front entry courtyard and provides access to the kitchen and powder room.



Kitchen

A dining or breakfast area introduces the kitchen, which boasts painted vigas, floral-themed tile work, and sunny windows. Friends and guests will be amply accommodated by the full sink, four-burner range, dishwasher, microwave, and refrigerator. Perhaps the most distinctive feature here is the lengthy shepherd's-style kiva fireplace; an informal bed above the hearth is kept warm by lingering embers long after the fire has gone out. A lovely Dutch door opens to reveal the enticing portal and brick courtyard beyond.



Courtyard

Ideal for entertaining, the lengthy portal is floored with wood decking and boasts small vigas, carved wood columns from Afghanistan, a banco, and a kiva fireplace with painted tile inlays. The vast courtyard is paved with bricks taken from the Fort Worth Stockyards; it facilitates grand outdoor entertaining or the display of sculpture. An adobe wall surrounds it.



Great Room

This grand space includes a wet bar area for entertaining, space for two double beds, and a handsome open living area with a view of a magnificent ancient tree. Brick floors, wood shelving, and a voluminous ceiling with square beams and delicate latillas are stylistic highlights. A striking fireplace composed of massive stones anchors the room.



Tree Atrium

An ancient gnarled grandfather of a tree stands sentinel over the guest residence from its atrium, visible from the great room through a large glass window. This regal fixture, surrounded by flagstone stepping-stones and ivy-covered coyote fencing, has become part of the guest residence itself, part of a wall and the ceiling having been shaped around one of its large branches.



Hot Tub Room

Behind a carved wood door that accesses the upper library, this lavish, indulgent space centers around a ceramic-tiled hot tub. The spa-like environs are fostered by handsome herringbone-patterned brick floors, a corner kiva fireplace, a room-sized step-in steamshower topped by a curved skylit ceiling, and a walk-in closet. willow-branch shutters open to overlook the great room. An East Indian-themed carved door provides a dramatic decorative touch.



Sloane Bathroom

A small vignette by American landscape painter and author Eric Sloane decorates the curved wall of this quiet bath, which is filled with a warm light. Brick flooring, a lengthy vanity with sunflower-themed tile, vintage wood cabinets, drawers, and shelves; and vigas and delicate latillas continue the singular style.



Library

An 18-foot ceiling of vigas and latillas soars above the brick-floored library, where shelves of antique wood line the walls nearly from floor to ceiling. The impressive space is kept bright and sunny during the day thanks to a large skylight and an artistic glass door that leads to the sculpture garden. Brick steps lead to the wine cellar and rise to the upper library and the guest residence beyond.



Upper Library Room

Brick steps lead up to the carpeted loft-like upper library, which offers additional bookshelves, storage drawers, and a nook for a desk overlooking the atrium. Highlights include a corner kiva fireplace with a stone hearth and a curved banco, oversized vigas and distressed decking, and a small skylight. From here, a carved wood door in a narrow entrance way opens to the guest residence.



Wine Cellar

A short flight of brick stairs lined by a carved wood rail lead down to a decorative wood door, behind which lies the wine cellar. This cool, well-lighted space includes a wall of wine-storage shelves as well as a raised auxiliary storage area with a small refrigerator.



Main Atrium

Providing an idyllic transition from the professional gallery spaces to the library and guest residence, this lush oasis brims with light and greenery. Two enormous skylights help maintain abundant plants and trees, among which sculpture, rocks and boulders, and a koi pond are nestled. The soothing sound of water completes the tranquility.



Little Egypt

Nestled beside a grassy lawn and near the Bunkhouse, the guest residence known as Little Egypt is an open, modern yet utterly relaxing private space. A rare expanse of lush green grass bound by walkways and a vine-covered fence provides the prelude to these alluring guest quarters. To the right lies the gateway to the Bunkhouse and its own private courtyard. The main sculpture garden is also nearby.



Great Room

This expansive open space offers room for relaxed living and dining as well as cooking. The cool white plaster of the walls contrasts dramatically with the vigas and handsome brick flooring. Skylights and windows—including a large windowed banco—flood the room with sunlight during the day. Decorative tile countertops and full-size appliances create a delightful kitchen area.



Bunk House

The secluded but convenient two-bedroom Bunkhouse includes comfortable, cozy living spaces and a host of classic Santa Fe-style elements. A private walled courtyard is an added amenity.



Gloriana's House

Steps from the main galleries and the sculpture garden, this warm, accommodating guesthouse has its own portal as well as a spacious bedroom, a sophisticated dining area, a cozy living room, and a charming kitchen.

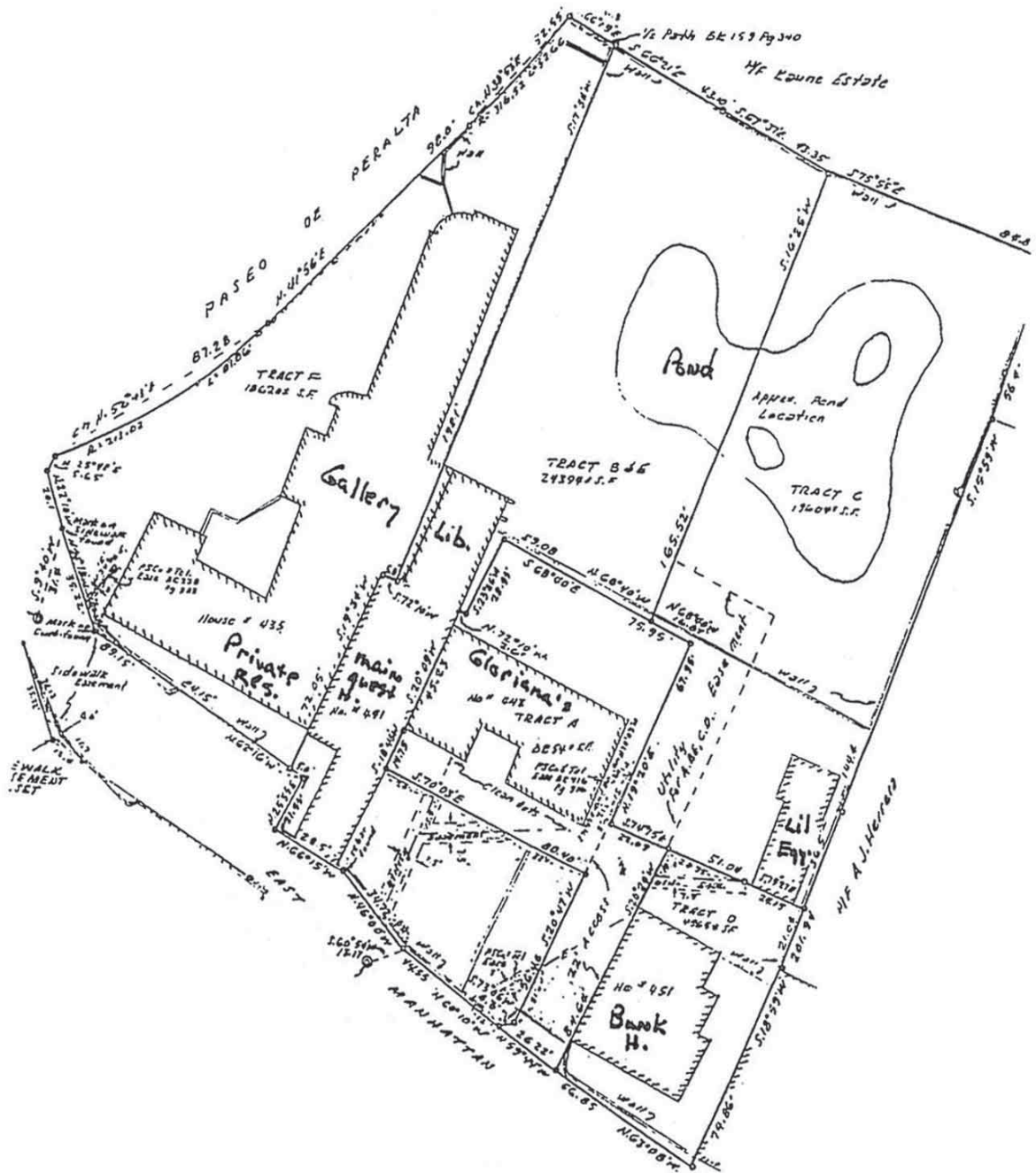


Sculpture Garden

Originally an apple orchard, this serene verdant area was transformed by Nedra Matteucci into a tranquil parklike area for the display of sculpture. Flagstone walkways and stepping stones meander among the grass and landscaping and alongside a shimmering free-form pond with a dramatic fountain. Mature trees tower overhead.



For Visual Aid Only



Property Detail

bedrooms	8
bathrooms	8 full 4 half
heating system	natural / gas
heating distribution	baseboard fireplace, forced air, radiant, wood stove
roof style	built up, flat multi-level, pueblo
cooling electric	refrigerative public
house constructions foundation	adobe frame, rock, stucco, basement, crawl space, slab
acreage	1.7548 acres
total square footage	20,066 ft ² (Main Structure 14,845 ft ²) (Little Egypt 843 ft ²) (Bunk House 1,882 ft ²) (Gloriana's House 1,248 ft ²) (Storage 1,248 ft ²)
taxes	\$39,171.98 in 2011
wastewater	city
water supply	city
zoning subdivision	AC/RC8 historic eastside

No representations or warranties either express or implied are made as to the accuracy of the information herein or with respect to the usability, feasibility or condition of the property. Subject to change, sale or withdrawal without prior notice of any kind.